



# NORTH WALES SAFEGUARDING BOARD

## STRATEGIC PLAN 2024 - 2025

## **INTRODUCTION**

The North Wales Safeguarding Adults and Children’s Board is pleased to publish and present its eight annual joint strategic plan for 2024– 25.

The Board’s principal and overarching aims are to support agencies to collectively fulfil their statutory responsibilities as outlined in Part 7 of the Social Services and Well-being Act (Wales) 2014, and to protect and prevent children and adults at risk in the region from experiencing abuse and neglect and other kinds of harm.

In the coming year, we remain committed to continuing to work together to meet the needs of the most vulnerable in our communities, and to learn any lessons to aid the future delivery of high quality, resilient and effective multi-agency safeguarding services.

A key objective identified in this year’s plan is to utilise our strong multi-agency partnership to respond to learning from not only practice reviews but also from regulatory inspections and other reviews where recommendations which strengthen multi-agency work are identified. The Board will also support the national safeguarding agenda, via the development of the Single Unified Safeguarding Review which preserves the non-blame, person-centred culture which we have developed in the current Practice Review model.

A further objective identified this year is to further embed the lived experiences of the people who we strive to protect from abuse, neglect and other kinds of harm in all Board discussions.

We remain acutely aware of the risk present within safeguarding work across all agencies with complex challenges currently impacting the whole of public sector. We are facing a significant cost of living crisis, which is expected to increase safeguarding risks to vulnerable children and adults, increasing the risk of abuse and neglect, mental health concerns and exploitation.

Across North Wales, we have seen numerous examples of creative and innovative work to ensure the wellbeing of citizens across the region. The North Wales Safeguarding Board would like to express it gratitude to all partner agencies and their workforce during this past year.

Jenny Williams

Chair North Wales Safeguarding  
Children Board

Neil Ayling

Chair North Wales Safeguarding  
Adults Board

## WHAT IS SAFEGUARDING?

The Welsh Government” Working Together to Safeguard People Guidance” Volume 1 states that the objectives of a Safeguarding Children Board are:

- a) To protect children within its area who are experiencing, or are at risk of abuse, neglect or other kinds of harm, and
- b) To prevent children within its area from becoming at risk of abuse, neglect or other kinds of harm.

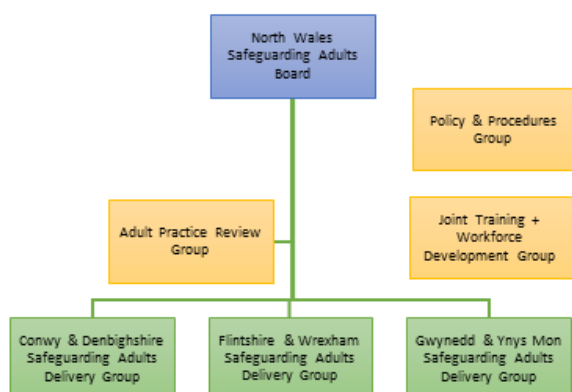
The objectives of a Safeguarding Adults Board are:

- a) To protect adults within its area who -
  - (i) Have needs for care and support (whether or not a local authority is meeting any of those needs), and
  - (ii) Are experiencing, or are at risk of, abuse or neglect
- b) To prevent those adults within its area mentioned in paragraph (a) (i) becoming at risk of abuse or neglect.

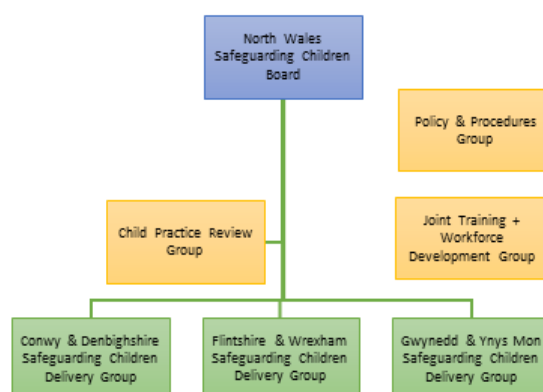
It is the role of both boards to set the strategic direction of safeguarding, including policy direction and monitoring the effectiveness of safeguarding within agencies across the region. Boards commission practice reviews and disseminate learning to practitioners which ensures that local learning is widely known and that safeguarding is high on the agenda at all levels of the workforce.

## BOARD STRUCTURES

### North Wales Safeguarding Adults Board



### North Wales Safeguarding Children's Board



## **BOARD MEMBERSHIP**

### North Wales Safeguarding Adults Board:

**Chair:** Neil Ayling (Chief Officer – Social Services Flintshire County Council)

National Probation Service – Head of Probation Delivery Unit, North Wales

**Vice Chair:** Michelle Denwood - Director of Safeguarding & Public Protection Betsi Cadwaladr University Health Board (BCUHB)

North Wales Police - Detective Superintendent / Protecting Vulnerable People Unit

Anglesey CC - Director of Social Services. Head of Adults Services

Public Health Wales – Designated Nurse National Safeguarding Team

Conwy CBC – Head of Children, Family & Safeguarding Services

North Wales Fire & Rescue Service - Business Education and Arson Reduction Team Manager

Denbighshire CC - Corporate Director Communities & Head of Community Support Services

Gwynedd Council – Corporate Director & Head of Adult Health and Wellbeing Services

Flintshire CC – Chief Officer Social Services & Senior Manager Safeguarding and Commissioning

National Independent Safeguarding Board Representative.

Wrexham CBC – Director Social Services / Head of Adult Social Care

Care Forum Wales – Chief Executive

BCUHB Director of Nursing Mental Health & Learning Disabilities

HMP Berwyn - Head of Public Protection

Welsh Ambulance Service Trust – Safeguarding Specialist Quality, Safety & Patient Experience Directorate

North Wales Safeguarding Children Board:

**Chair:** Jenny Williams (Director of Social Care and Education - Conwy County Borough Council)

National Probation Service – Head of Probation Delivery Unit, North Wales

**Vice Chair:** North Wales Police - Detective Superintendent / Protecting Vulnerable People Unit

Barnardo's – Assistant Director Children's Services

Anglesey CC –Director of Social Services, Head of Children and Family Services

Public Health Wales – Designated Nurse National Safeguarding Team

Denbighshire CC – Corporate Director Communities & Head of Education & Children's Services

Wrexham Youth Justice Service – Head of Service

Flintshire CC – Head of Children's Services & Director of Social Services

Youth Justice Service – Service Manager Prevention & Support

Gwynedd Council – Head of Children & Support Families and Corporate Director

National Independent Safeguarding Board Representative.

Wrexham CBC – Head of Children's Services

NSPCC

Betsi Cadwaladr University Health Board - Director of Safeguarding & Public Protection & Named Doctor Children's safeguarding

Welsh Ambulance Service Trust – Safeguarding Specialist Quality, Safety & Patient Experience Directorate

## **WHAT ARE THE STRATEGIC PRIORITIES / OBEJECTIVES OF THE NWSB IN 2024/25**

Given the NWSB has seen an increase in the number of child practice reviews starting in 2023 / 24, a number of actions will be identified in this year from the reviews. We have also seen the publication of National and Regional Inspections which will have implications for all board partners. The National Independent Safeguarding Board publication in 2023 in relation to thematic findings from Child Practice Reviews has highlighted significant areas of practice which the board continue to address.

The NWSB will also need to manage the transformation to the Single Unified Safeguarding Review process during this financial year.

- 1. To respond effectively to the learning identified from Practice reviews / Regulatory Inspections and other reviews. (NWSB)**
- 2. Effective engagement and communication: To improve engagement and consultation with children and adults at risk, vulnerable groups, professionals and partnerships (NWSB)**
- 3. To continue to ensure a robust, resilient, and consistent approach to emerging safeguarding themes (NWSB)**

## **North Wales Safeguarding Boards (NWSB) Priorities**

**Strategic Priority 1** - To respond effectively to the learning identified from Practice reviews / Regulatory Inspections and other reviews (NWSB)

**Outline of Need:** Due to the increase in the number of child practice review referrals and regulatory inspection activity the Board will need to prioritise its work in this area. Also respond to the Single Unified Safeguarding Review work undertaken by Welsh Government

<b>Ref</b>	<b>Priority Focus</b>	<b>What do we want to achieve?</b>	<b>What are the outcome indicators</b>	<b>Sub Group Lead</b>
1.1	Child/Adult at Risk	Reduce delays in starting Adult and Child Practice reviews due to limited number of reviewers and chairs available	<p>Reduced reliance of commissioning external reviewers</p> <p>Multi-agency Attendance at Practice Review training offered by the NWSB</p> <p>Multi –agency Attendance at the National SUSR Welsh Government training</p> <p>Shared responsibility across all board partners to providing reviewers and Chairs</p> <p>Development of a Practice review reporting framework</p>	SUSR CPR/APR Group
1.2.	Child/Adult at Risk	Members of the RSB and its sub groups will continue to support the	The NWSB continue to contribute to the development of and influence national	SUSR CPR/APR Group

Ref	Priority Focus	What do we want to achieve?	What are the outcome indicators	Sub Group Lead
		Single Unified Safeguarding Review national project.	safeguarding, policy, guidance and legislation.	
1.3.	Adult / Child at Risk	Expand the application of learning from completed reviews via sharing this information with other relevant Board sub-groups and workstreams	Recommendations arising from reviews will have a wider reach and therefore facilitate a more comprehensive regional response to learning	SUSR CPR/APR Group
1.4	Adult/Child at Risk	Greater oversight at the Joint NWSB in ensuring lessons from regulatory inspections are shared and responded to	Agenda items at the Joint Board	Joint NWSB



## **North Wales Safeguarding Boards (NWSB) Priorities**

**Strategic Priority 2** - Effective engagement and communication: To improve engagement and consultation with children and adults at risk, vulnerable groups, professionals and partnerships (NWSB)

**Outline of Need:** The NWSB need to improve engagement and consultation during 2024 – 25 and to support consultation work taking place across the region

<b>Ref</b>	<b>Priority Focus</b>	<b>What do we want to achieve?</b>	<b>What are the outcome indicators</b>	<b>Sub Group Lead</b>
<b>2.1</b>	Child/Adult at Risk	<p>Effective communication and engagement with adults at risk which enables their voice to directly influence our strategic priorities and work plans.</p> <p>Identify key forums already in existence and develop strong links to facilitate regular consultation with vulnerable groups.</p>	The Board's work will be directly influenced by the voice of adults and children at risk.	NW Safeguarding Board /Business Unit
<b>2.2</b>	Child/Adult at Risk	The Board to consider and hear case studies and lived experiences of children and adults at risk	The voice and lived experiences of children and adults at risk will be a core feature of all Executive Board meetings	NW Safeguarding Board /Business Unit
<b>2.3</b>	Child/Adult at Risk	Communication with Other Regional Strategic Safeguarding Partnerships	<p>Shared priorities and opportunities for any joint working will be established.</p> <p>Assurance will be provided to the Board that contextual safeguarding issues are adequately</p>	NW Safeguarding Board /Business Unit

Ref	Priority Focus	What do we want to achieve?	What are the outcome indicators	Sub Group Lead
			managed within local partnerships and public protection forums.	
2.4		<p>Raise awareness of the Regional Safeguarding Board and its work. This will be communicated through:</p> <p>Routinely disseminate 7 Minute Briefings in relation to key areas of practice, policy and research</p>	<p>Monitoring of the level of activity on the NWSB website</p> <p>Practitioners will be aware of current priorities and pieces of work within the Board</p> <p>Practitioners will feel more informed in relation to key practice and policy developments and its relevance to their role</p>	NW Safeguarding Board Business Unit

**Strategic Priority 3: To continue to ensure a robust, resilient and consistent approach to emerging safeguarding themes**

**Outline of Need:** The Regional Safeguarding Board responds effectively to emerging safeguarding themes and supports the coordination of an effective multi-agency response.

Ref	Priority Focus	What do we want to achieve?	What are the outcome indicators	Sub Group Lead
3.1	Child/ Adults at Risk	Continue to work with the National Independent Safeguarding Board and Manchester Metropolitan University to shape, influence and develop a national safeguarding performance framework for children and adults at risk	Regional performance reporting will be underpinned by an agreed national model and be consistent with other Boards across Wales	Local Delivery Groups
3.2.	Child/ Adults at Risk	Develop a Framework that measures and assesses the availability and quality of safeguarding training to multi-agency practitioners.	The Board will assure practitioners have access to high quality safeguarding training that meets their learning and development needs to effectively safeguard children and adults at risk.	Workforce Development and Safeguarding Training sub group
3.3.	Child/ Adults at Risk	Evaluate the impact of regional work undertaken against the CSA Action Plan, Prevention of abuse of older people and IICSA Report, alongside ongoing national work.	The impact of this work will be understood and can inform further practice in this area.	Local Delivery Groups

Ref	Priority Focus	What do we want to achieve?	What are the outcome indicators	Sub Group Lead
3.4.	Child/ Adults at Risk	Review Regional Safeguarding Board /sub groups functions and responsibilities to ensure it is able to meet future challenges	Refreshed and updated terms of reference and focus.	Joint NWSB

## HOW MUCH DO WE PLAN TO SPEND?

The Board is funded by contributions from statutory partner agencies who have agreed the funding formula as set out in the Welsh Government document 'Working Together to Safeguard People Volume 1 – Introduction and Overview', the guidance which accompanies the Social Services and Well-being (Wales) Act 2014.

This funding resources a regional safeguarding business unit consisting of a Business Manager, 2 x Business Co-ordinators who provide support for NWSB Board.

The specific costs are set out below.

<b>Expenditure:</b>	<b>£</b>
Business Unit Staffing Costs:	170,000.00
Hosting, Website, Finance, Communications & IT costs	4,000.00
Training:	12,500.00
Practice Reviews / SUSR:	40,000.00
SUSR Implementation Costs	42,000.00
Sundry Costs (Room Hire, Safeguarding Week etc.):	15,000.00
<b>Total expected expenditure:</b>	<b>£ 283,500.00</b>

## **COLLABORATIVE WORKING**

Across North Wales we have a long history of collaboration across agencies and partnerships. This collaborative work is reflected in the membership of both of our Boards which includes not only the statutory partners prescribed in guidance, but also voluntary sector partners and those where safeguarding is an integral part of their work.

This inclusive approach allows us to include partners who can influence the safeguarding agenda on a local, regional and national level. This is demonstrated by our closer working relationships with the Office of the Police and Crime Commissioner, Safer Communities Board, the Coroner and nationally recognised bodies such as Older Peoples commissioner / Children's Commissioner and the NSPCC / Barnardo's Cymru.

Board members ensure that the work from relevant partnership groups is recognised and reported at Board level. In the coming year we plan to develop these collaborative links.

We will continue to work in close partnership with the National Independent Safeguarding Board (NISB). Our link member attends all Board meetings and provides regular updates on the work of the NISB.

## CONTACT INFORMATION AND USEFUL LINKS

Everyone has a duty to be alert to concerns about the abuse and neglect of people and know to whom they should report their concerns.

If you are worried that a child or adult is being abused or neglected, you must report your concerns to your local Social Services contact.

Details are listed below:

### **If you have concerns about a child:**

#### **Anglesey**

01248 725 888

01248 353 551 (out of hours)

#### **Conwy**

Social Services: 01492 575111

Out of Hours: 0300 1233079

#### **Denbighshire**

01824 712200: Monday – Friday 9am – 5pm

0345 053 3116: Evenings and weekends

#### **Flintshire**

01352 701 000

0345 053 3116 (out of hours)

#### **Gwynedd**

01758 704 455

01248 353 551 (out of hours)

#### **Wrexham**

01978 292 039

0345 053 3116 (out of hours)

### **If you have concerns about an adult:**

#### **Anglesey**

01248 750057

01248 353551 (Out of hours)

#### **Conwy**

0300 4561111 (Office hours)

0300 1233079 (Out of hours)

#### **Denbighshire**

0300 4561000

0345 053 3116 (Out of hours)

#### **Flintshire**

03000 858858

0345 053 3116 (Out of hours)

#### **Gwynedd**

Adults Department, Health and

Wellbeing 01766 772577

01248 353551 (Out of hours)

#### **Wrexham**

01978 292066

0345 053 3116 (Out of hours)