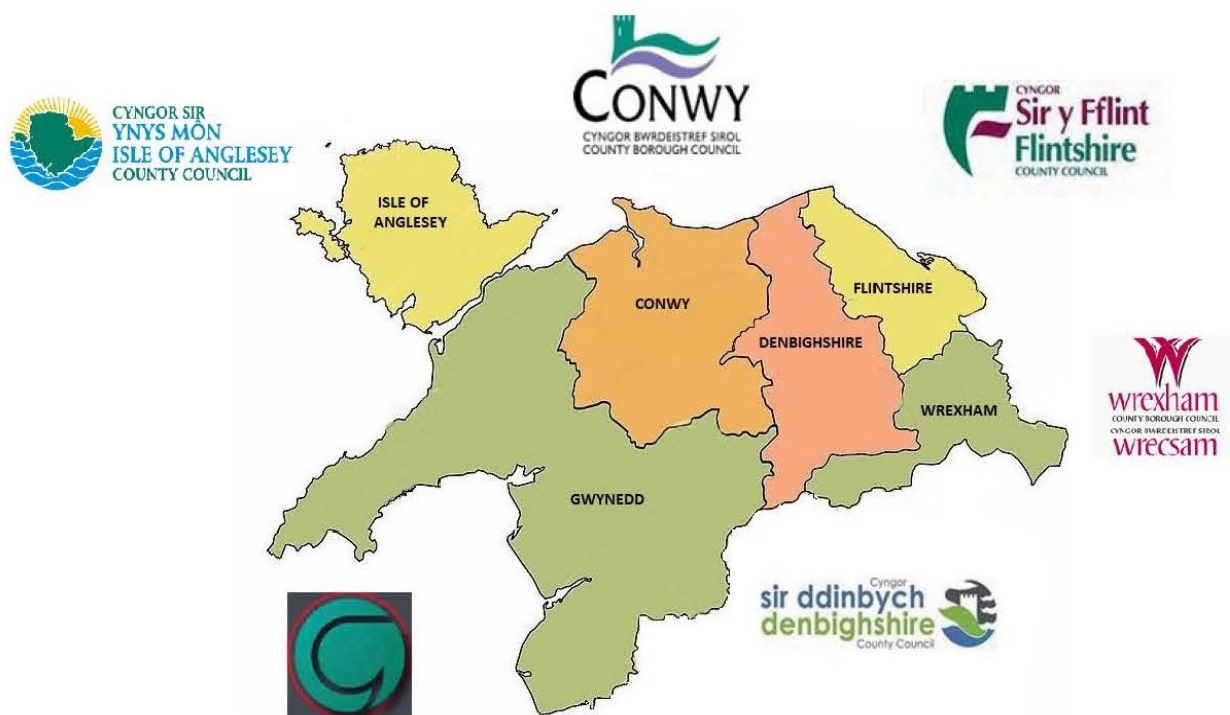




NORTH WALES SAFEGUARDING BOARD

Annual Report

2021 – 2022



Introduction:



It gives us pleasure to jointly present the North Wales Safeguarding Board Annual Report

This Annual Report outlines the progress we have made against the outcomes set by NWSAB and NWSCB as part of our joint Annual Strategic Plan for the year 2021-22. As we proceed to publication, we as a Regional Safeguarding Board and the agencies we represent, it is now over two years since the start of the first lockdown due to Covid19. Never before has the need for agencies across the strategic partnership to work together collaboratively, to ensure those most at risk and in need continue to be protected and safeguarded from harm, been so important.

Over the last two years our resolve and resilience as accountable public agencies has been tested to their limits in the most challenging of circumstances. Through excellent partnership working, we as a region have been able to recognise and value the strength and benefits of a collaborative response to this national emergency.

We must acknowledge the challenges ahead in the new financial year, we are starting to see the full impact Covid19 has had on the workforce in the region. Recruitment and Retention of staff has impacted all agencies in the region. A number of experienced Safeguarding Staff in the region have made the decision to move away from frontline safeguarding practice. Safeguarding Practitioners continue to highlight the complexity of cases that are being referred into all agencies

These unprecedented challenges have demonstrated the paramount importance of the Regional Safeguarding Boards in ensuring a multi-agency response to challenges in the safeguarding of children and adults at risk.

Finally, we would like to thank the members of the North Wales Safeguarding Boards and sub-groups for their engagement, commitment and progress made in the last year but most importantly the whole safeguarding workforce across the region.

Jenny Williams
Chair North Wales Safeguarding Children's Board

Neil Ayling
Chair North Wales Safeguarding Adults Board

Everybody has the right to be safe no matter who they are or what their circumstances – Safeguarding is Everyone's Business

[Watch 'See Something, Say Something'](#)



If you suspect a person is at immediate risk of harm call 999 and speak to the Police.

If you have been or still are the victim of abuse, or you know someone who you think is being abused, contact your local authority – contact details are listed on the website.

Contents:

Chapter

Page

	Objective of the Safeguarding Boards	5
1	About the North Wales Safeguarding Boards	5
2	Action the Safeguarding Boards have taken to achieve particular outcomes.	7
3	The extent to which the Safeguarding Board has implemented its most recent Annual Plan.	10
4	How have the Safeguarding Boards collaborated with other persons or bodies engaged in activities relating to the board's objectives?	14
5	Any requests the Safeguarding Board has made to qualifying persons under section 137(1) of the Act for specified information, and whether the requests were complied with.	15
6	Achievements of the Safeguarding Boards during the year.	16
7	The extent to which each member of the Safeguarding Board contributed to the Board's effectiveness.	19
8	An assessment of how the Safeguarding Boards used its resources in exercising its functions or achieving its outcomes.	30
9	Any underlying themes in the way the Safeguarding Boards exercised its functions as shown by an analysis of cases it has dealt with, and any changes it has put into practice as a result.	33
10	The number of adult protection and support orders which were applied for in the Safeguarding Board area.	36
11	When and how children or adults exercised an opportunity to participate in the Safeguarding Board's work.	37
12	Any information or learning the Safeguarding Board has disseminated, or training it has recommended or provided.	38
13	How the Safeguarding Board has implemented any guidance or advice given by the Welsh Ministers or by the National Board.	39
14	Other matters relevant to the work of the Safeguarding Boards.	41
	Appendix 1: Glossary	43

Objective of the Safeguarding Boards:

Serving the citizens and diverse communities of the North Wales region which encompasses six Local Authority areas does not come without significant challenges. The board and its members however continue to be proud of the strong ethos of collaboration and partnership working that has been established at a senior executive board and sub group level. We look forward to the year ahead and continuing to build upon the strong foundations established in the preceding five years to deliver against our objectives and our aspiration to achieve excellence in Safeguarding work, professional practice and the services we provide to our communities.

Protecting and preventing children and adults at risk from experiencing harm and promoting the wellbeing of the people of North Wales enabling them to achieve better outcomes remains central to the Board's work.

Areas have been identified for continuing improvement and will enable the Board and its members to fulfil their statutory responsibilities as outlined in Part 7 of the Social Services and Well-being Act (Wales) 2014 to protect and prevent children and adults at risk in the region from experiencing abuse and neglect and other kinds of harm.

1.0 About the North Wales Safeguarding Boards:

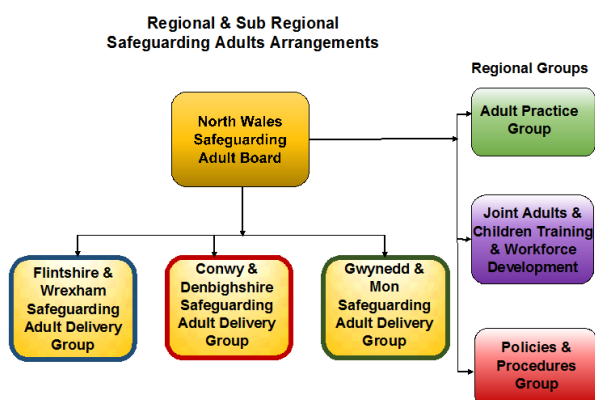
1.1 Structure & Membership:

The North Wales Safeguarding Boards currently meet three times per year and jointly once a year. In addition, there is also a joint Business Development Day held annually to set the priorities for the coming year and self-assess the progress of the Boards.

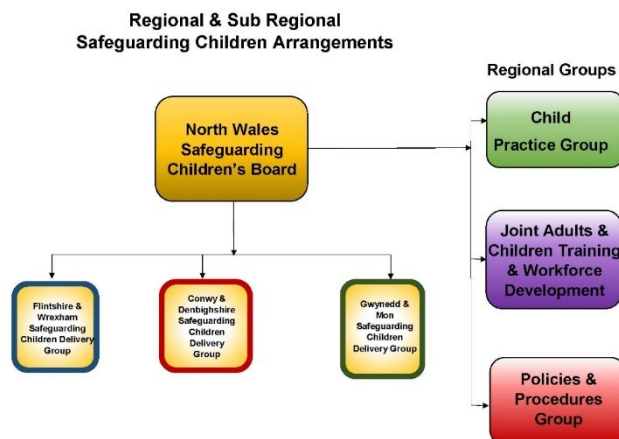
The Board's Practice Delivery Groups and the Children's Policies and Procedures Group currently meet on a quarterly basis. The Practice Review Groups, the Adults Policies and Procedures Group and the Joint Workforce and Training Group meet bi-monthly.

Board Structures:

North Wales Safeguarding Adults Board



North Wales Safeguarding Childrens Board

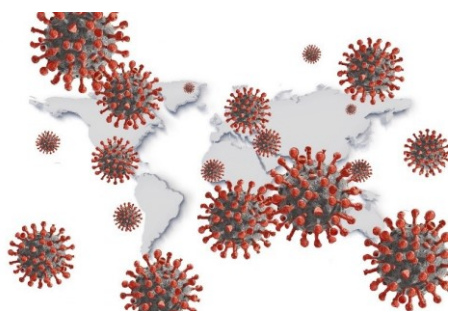


Board Membership:

North Wales Safeguarding Adults Board	Chair: Neil Ayling Chief Officer – Social Services Flintshire County Council
<p>Vice Chair: Michelle Denwood - Director of Safeguarding & Public Protection Betsi Cadwaladr University Health Board BCUHB)</p> <p>Anglesey CC - Director of Social Services. Head of Adults Services</p> <p>Conwy CBC - Strategic Director of Social Care & Education. Head of Service for Children, Family and Safeguarding</p> <p>Denbighshire CC - Corporate Director Communities. Head of Community Support Services</p> <p>Flintshire CC – Chief Officer Social Services. Senior Manager Safeguarding & Commissioning</p> <p>Gwynedd CC – Corporate Director. Head of Adult Health and Wellbeing Services</p> <p>North Wales Police - Detective Superintendent/PVPU</p>	<p>Wrexham CBC - Chief Officer Social Care</p> <p>North Wales Fire & Rescue Service - Business Education & Arson Reduction Team Manager</p> <p>BCUHB Director of Nursing Mental Health & Learning Disabilities</p> <p>HM Prison & Probation Service – Designated Officer</p> <p>Public Health Wales – Designated Nurse National Safeguarding Team</p> <p>Care Forum Wales – Chief Executive</p> <p>Welsh Ambulance Service Trust – Head of Safeguarding</p> <p>HMP Berwyn – Head of Safety and Equality (Vacant)</p>

NORTH WALES SAFEGUARDING CHILDREN BOARD	Chair: Jenny Williams - Director of Social Care and Education - Conwy County Borough Council
<p>Vice Chair: Simon Williams - Detective Superintendent PVPU - North Wales Police.</p> <p>Director of Social Services, Head of Children & Family Services – Anglesey Council</p> <p>Head of Children, Family & Safeguarding Services – Conwy County Borough Council</p> <p>Corporate Director Communities & Head of Education & Children’s Services – Denbighshire County Council</p> <p>Chief Officer Social Services. Head of Children’s Services- Flintshire County Council.</p> <p>Head of Children & Support Families and Corporate Director - Gwynedd Council.</p> <p>Head of Children’s Services – Wrexham County Borough Council</p> <p>Designated Nurse National Safeguarding Team – Public Health Wales</p>	<p>Betsi Cadwaladr University Health Board - Director of Safeguarding & Public Protection & Named Doctor Children’s safeguarding</p> <p>Service Manager Prevention & Support Youth Justice Service</p> <p>Head of Service - Wrexham Youth Justice Service</p> <p>Head of Local Delivery Unit – Probation & Prison Service</p> <p>Head of Corporate Safeguarding, Assistant Director Children’s Services - Barnardo’s</p> <p>Safeguarding Specialist Quality, Safety & Patient Experience Directorate - Welsh Ambulance Service Trust</p>

2.0 Action the Safeguarding Boards have taken to achieve particular outcomes.



NWSB Response to Covid-19

During 2021-22, the NWSB continued to monitor the impact of Covid-19. From the previous annual report, we identified the impact on safeguarding referrals/reports and how all agencies across the region responded to that.

The NWSB demonstrated how it has responded to the Welsh Government Interim Guidance around the role of the Regional Safeguarding Boards during Covid19. All Board meetings and sub group meetings continued throughout 2021-22.

From the Boards discussions during the year the following issues have been identified:

Workforce and Recruitment – current challenges in the sector, shortage of front line safeguarding staff. All agencies have highlighted this as a challenge during 21-22.

Placement choices for Children Looked After, the need to increase the choice of placements /

recruitment of Foster Carers / where possible reducing the need for unregulated placements.

- ❖ Increase demand in Adult Safeguarding Reports/ Referrals.
- ❖ Complexity of Safeguarding Cases in Adult and Children services. Multiple practice issues for workers to deal with.
- ❖ Management of Section 5 process – different approaches in each Local Authority area.
- ❖ Financial Hardship.
- ❖ Implementation of the Liberty Protection Safeguards.
- ❖ The impact of WAST Ambulance delays.

By holding these discussions at the Board, it enables all partners to appreciate the current pressures and where possible promote a regional response.

NWSB Response to the 'Everyone's Invited' Website

During this year, both the North Wales Safeguarding Children's Board and the North Wales Safeguarding Adults Board undertook a response to the allegations made within this website. The website and Instagram account called 'Everyone's Invited' invites people to share their rape culture experiences anonymously but it does invite them to name their school or university.

We identified a number of schools, colleges and universities in the region that were named. In response to these serious allegations, we sought reassurance from the Directors of Education in relation to the concerns and we were able to see the safeguarding measures that had been put in place at the time and the additional measures that had been undertaken to ensure that pupils/ family members had access to in relation to highlighting a safeguarding concern. A range of materials including 'Stop It Now' and the 'Centre of Expertise on Child Sexual Abuse' are all available in schools in North Wales.

In relation to Adults at Risk, the NWSAB undertook an audit of safeguarding policies that Further Education Colleges and Universities in the region had. We saw an excellent example from Coleg Cambria. Although we did identify some gaps in other safeguarding policies in the area around the Adult at Risk legislation.

A NWSB event will be held with the further education colleges and universities later this year where we will highlight Wales Safeguarding Procedures and also specific themes that are relevant such as Modern Day Slavery and Spiking.

Due to the national concerns around the increase in Spiking cases, the NWSB developed a specific 7-minute briefing on this issue.

 [7 Minute Briefing - Spiking](#)

NWSAB response to Historical Allegations of Abuse

The NWSAB received correspondence from a family member and other interested parties in relation to a historical report around the disagreements between the Managers and Staffing within a Hospital ward. In liaison with the Welsh Government Safeguarding and Advocacy Unit,

the NWSAB created a Multi-Agency Task and Finish Group to review historical information to clarify that any safeguarding concerns had been escalated appropriately in accordance with National Guidance at the time.

The Multi-Agency Task and Finish Group were able to identify that safeguarding issues were escalated in accordance with the guidance. We also highlighted that since 2014 we have seen significant changes in safeguarding practice in relation to both the legal framework in Wales and also in relation to practice. The Social Services and Wellbeing Act 2014 has now placed adult safeguarding on a statutory footing and we now have the Wales Safeguarding Procedures 2019.

Since the establishment of the NWASB in late 2014, significant work has taken place with all partners in relation to improving safeguarding practice, by implementing the new Procedures. We have focused on compliance with the Wales Safeguarding Procedures and improved joint working between the agencies.

Improved Joint Working between Safeguarding Partnerships Boards across North Wales

As a region we have continued to strengthen the relationship between the Safeguarding Partnerships across North Wales.

Partnership Board Structure

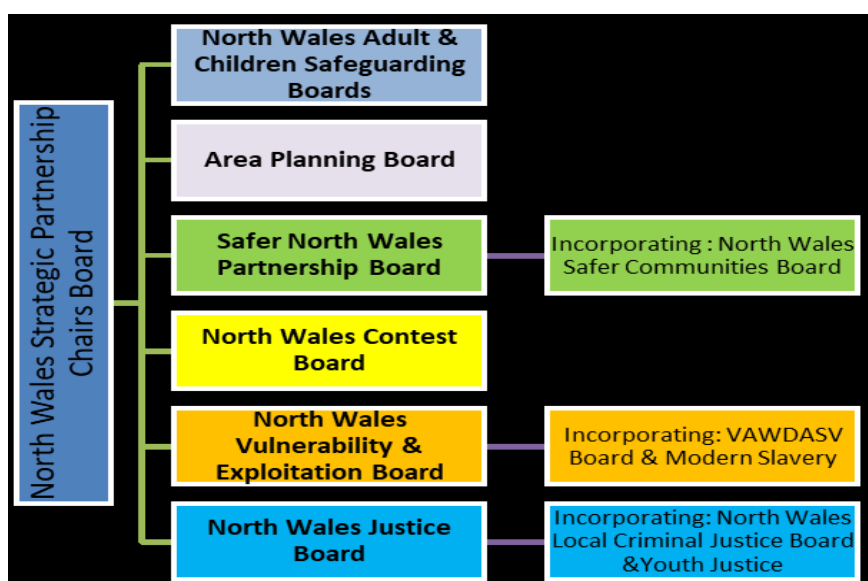
The Chairs of the Strategic Boards meeting is working to:

Provide strategic oversight of the Boards to ensure effective partnership working and minimise the likelihood of silo working.

To ensure that the collective work of the Strategic Boards delivers national and regional priorities in relation to protecting communities, preventing crime, pursuing criminals and protecting and supporting the vulnerable.

In the area of the work around the Single Unified Safeguarding Review, quarterly updates have been shared and discussions are taking place around the move to one case practice review group.

During this period, we have also integrated the Regional Safeguarding Training sub group with the Regional VAWDASV training group. This provides the opportunity to share learning and avoid duplication in work programmes.



3.0 The extent to which the Safeguarding Board has implemented its' most recent Annual Plan.

Strategic Priority 1 - Continue to promote awareness and compliance around the Wales Safeguarding (Adults) Procedures (NWSAB).

In relation to this priority area, each statutory agency of the NWSAB was asked to complete a self-assessment toolkit.

The toolkit covered the following areas:

- ❖ Policies and procedures
- ❖ Recording requirements
- ❖ Workforce development
- ❖ Organisational culture
- ❖ Commissioning

In relation to the summary of findings agencies have updated policies and procedures in accordance with the Wales Safeguarding Procedures. All agencies had provided evidence regarding the safeguarding training delivered in the year.

The concern identified within the audit was in relation to Section 5 of the Wales Safeguarding Procedures. Agencies felt that this section needed further work on a national level. In particular, in relation to the outcomes from the end of the section 5 process regarding the individual, it was identified further work was needed in this practice area. Agencies would also benefit from additional guidance around the threshold for a Section 5 meeting. The feedback from this section of the audit was escalated to the National Project Board.

In addition, we were also able to identify the work that organisations had undertaken in ensuring that IT systems had been updated to ensure compliance with the Wales Safeguarding Procedures.

Additional areas of work were identified in relation to Commissioning. Contracts across the region were being updated to reflect the Wales Safeguarding Procedures. This has led to work being done with Care Providers in ensuring that staff had access to training and policies within the setting clearly reference Wales Safeguarding Procedures.

During the year, the NWSAB commissioned specific training on Person Centered Practice and the Wales Safeguarding Adult Procedures.

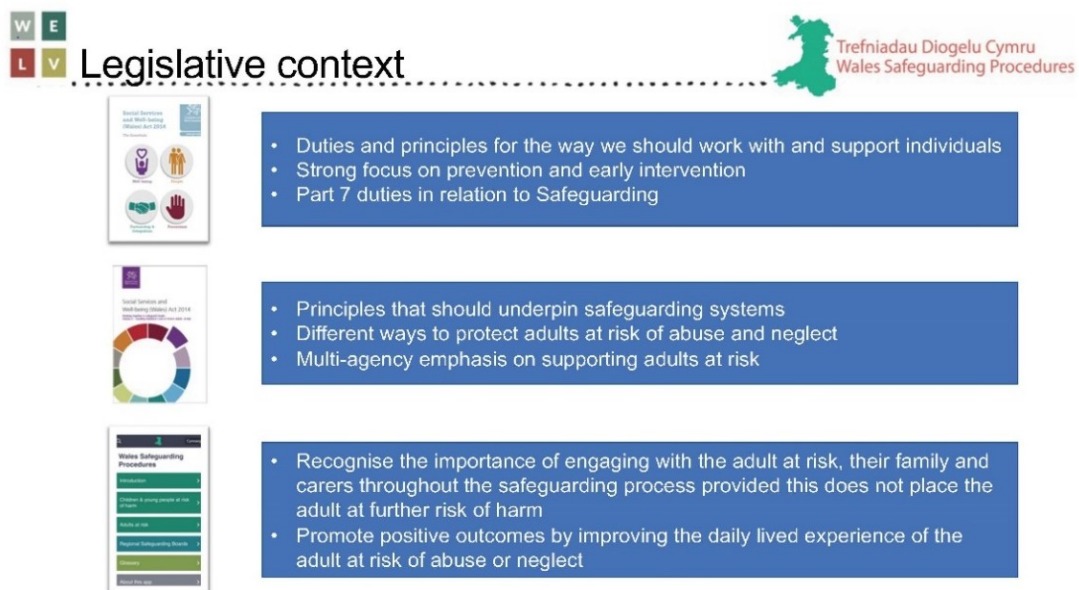
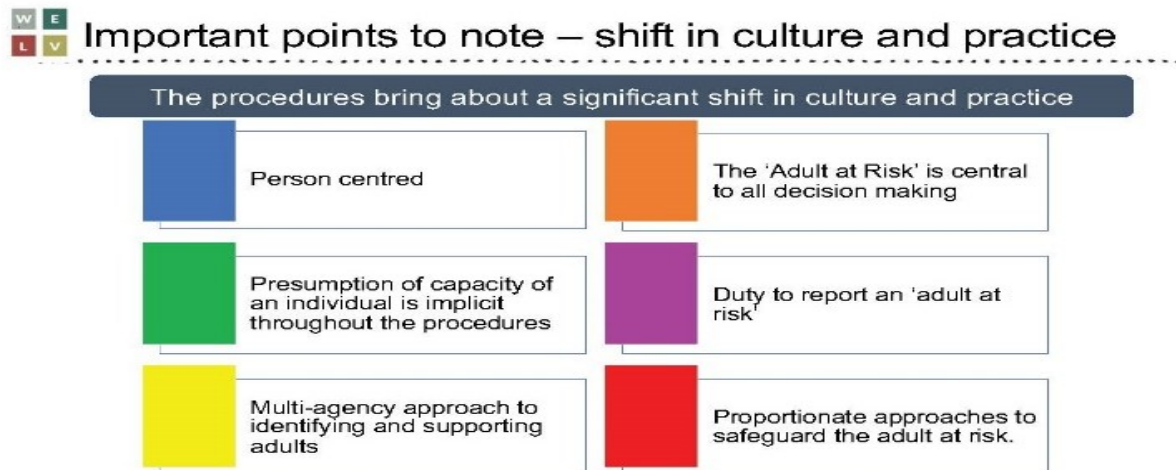
Aims of the workshop:

- ❖ To highlight how the Wales Safeguarding Procedures underpins the move away from process-led, target focused safeguarding interventions to a more person-centred approach and to achieve the desired outcomes of the adult, (outcomes that were

checked and could change throughout the intervention).

- ❖ To consider how individuals working engaged in safeguarding activity can demonstrate a person centred approach in practice but also how an organisation can demonstrate a commitment to person centred approaches within safeguarding processes

Over 200 multi-agency staff attended the workshops during the year.

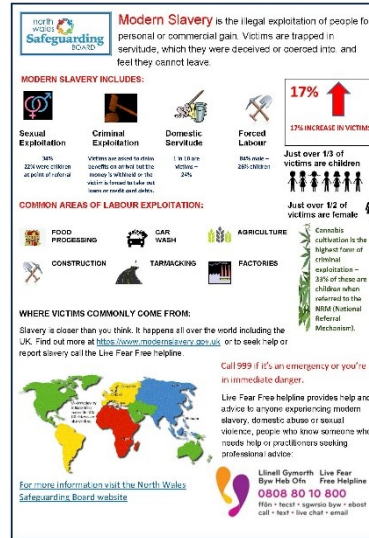
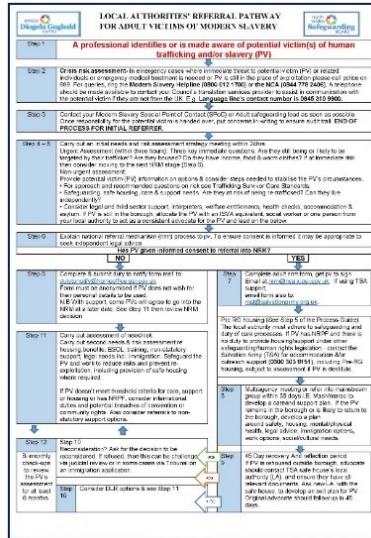


The NWSAB has also done further work in the following areas around:

- ❖ Ensuring that multiagency safeguarding pathway is effective around Domestic Abuse and Adult at Risk Cases.
- ❖ In response to the increase in Domestic Abuse Cases, a pilot of weekly MARAC meetings took place across the region. A good practice example was shared at the NWSB conference.
- ❖ The NWSAB also developed a specific practice guide in relation to the Adult at Risk and Domestic Abuse.

 [Multi-Agency Practice Guidance for Dealing with Cases of Domestic Abuse to Safeguard Adults with Care & Support Needs](#)

- ❖ NWSAB during safeguarding week also developed a Modern Slavery Pathway document for Adults at Risk together with further awareness raising material.



[Modern Slavery Referral Pathway](#)

[Modern Slavery Poster](#)

Work has also continued within BCUHB around the 126 enquiries pilot, the aim is to support Health Practitioners undertake the 126 enquiry when appropriate.

Strategic Priority 2 -Continue to promote awareness and compliance around the Wales Safeguarding (Children) Procedures (NWSCB)

A self-assessment toolkit was created for each Statutory Board Agency to complete.

From the audits completed, we were able to identify that each agency had undertaken additional training in relation to the Wales Safeguarding Procedures. Work had been undertaken in a number of local authorities in relation to updating IT systems to ensure compliance with the Wales Safeguarding Procedures.

The feedback from the self-assessment tool kit also identified the practice issues in relation to Section 5 of the Wales Safeguarding Procedures. The transition from using Part 4 of the old All Wales Safeguarding Children Procedures to Section 5 of the Wales Safeguarding Procedures was challenging.

All six authorities highlighted the number of inappropriate cases that were being referred into the authority. Similar to the Adults Board, the issues were highlighted to the National Project Board.

Within the audit we could also identify a number of examples in relation to child centered practice, support provided to the Child during the Child Protection Conference. Not only via advocates but from Peers/ Buddies

We also started to focus more on the Lived Experiences of the Child. The NWSCB produced guidance for staff highlighting the following good practice:

To ensure the lived experience is captured using the child or carer giver's own words and

experiences the professional should be curious when having a conversation:

- ❖ Open questions will help to start the conversation and act as prompts to enable the conversation to progress.
- ❖ Pick up on clues such as body language and facial expressions to explore feelings or find out further information from the child or care giver.
- ❖ Go at the child/ care giver's pace when sharing their lived experience.
- ❖ Check out that you have understood what has been shared.
- ❖ When a child has limited language due to age or learning needs the professional can use their knowledge of the expected outcomes for the child's age and stage of development as well as their observations and information that is shared by the care giver and professionals working with the child.
- ❖ Record the conversation using the child and care giver's own words and expressions as much as possible "I had no breakfast today....."
- ❖ Be creative to capture lived experiences e.g. pens and paper for drawing, writing it down, record on phone, create a blog.
- ❖ Capture lived experiences over several conversations, it does not have to be done in one go.
- ❖ Explore what the child and care giver think their family strengths are; what they are proud of.
- ❖ Explore what the child and care giver would like to change for their family as well as parts of the day that they like or find difficult.
- ❖ Analysis of what their lived experiences are telling us will inform assessment, planning and reviews

 [Daily Lived Experience Guidance](#)

The NWSCB have also continue with the implementation of the National CSA action plan. Focus throughout the year on promoting the Stop It Now campaign and input throughout the year with the Centre of Expertise for Child Sexual Abuse. This included presentations from the Centre to the Full Board and presentations to the Local Delivery Groups.

At the start of the year, presentations were given on behalf of Welsh Government in relation to Working Together to Safeguard People, Volume 7, Safeguarding children from child sexual exploitation.

It was accepted that within the region we have further work to do in relation to this guidance. The guidance highlighted that an over-reliance on specialist risk assessment tools does not always support child-centred practice and may detract from professional judgement.

Strategic Priority 3: To continue to ensure a robust, resilient and consistent approach to safeguarding practice during the Covid- 19 pandemic

At both Board meetings over the last year, discussions took place regarding the impact of Covid on the workforce.

A number of practice issues were highlighted:

- ❖ Not being based in the office with colleagues.
- ❖ Isolation for a number of workers living alone.
- ❖ Workers having to give evidence in court hearings from their home

The Board sought reassurance from all organisations in attendance at board meetings, their workforce had access to support services that promoted their wellbeing.

During 2021, Board members highlighted the challenges of recruitment in the partner agency reports. In particular front line safeguarding teams.

It was highlighted that a number of experienced front line safeguarding workers have decided to move onto new positions.

The Board in response commissioned more Joint Investigation Training and Achieving Best Evidence training, via North Wales Police during this period. The Joint Investigation training has taken place virtually on a rolling basis. The training is funded by the NWSB. To meet demand 3 further ABE sessions are being held currently.

In relation to Adult Safeguarding, the Board commissioned additional training on Person Centred Practice and Wales Safeguarding Adults Procedures.

These issues have been highlighted to the WG and to SCW and have impacted the six safeguarding boards which had led to the national campaigns regarding recruitment into social care and health.

The Board have continued to monitor its Risk Register which includes the issues around Recruitment and Retention.

4.0 How have the Safeguarding Boards collaborated with other persons or bodies engaged in activities relating to the board's objectives?

The Business Manager has continued to attend the quarterly meetings with the Welsh Government and the National Independent Safeguarding Board representative alongside other managers from Regional Safeguarding Boards to discuss both national and local issues.



The North Wales Safeguarding Board has and still is consistently contributing to the Wales Safeguarding Procedures National Project Board. In addition, we have representatives at of the all relevant SUSR groups.



The Safeguarding Lead from the Older Peoples Commissioner for Wales Office presented at the Joint NWSB meeting in September 21. In response the NWSAB have continued to promote awareness in relation to key themes in Adult Safeguarding such as Domestic Abuse, Financial Abuse and Self Neglect.



In relation to the Children's Commissioner for Wales, we have provided evidence in relation to the need to strengthen the legal requirements for Home Educated Children and highlighted the increase in numbers in arrangements following Covid19.



The NWSCB also provided a response in relation to the consultation around Independent Schools and the need to strengthen safeguarding arrangements in these schools. The Director of Social Services in Denbighshire presented evidence to the IICSA inquiry around the experiences of the Local Authority in trying to oversee safeguarding concerns in the Independent School.



The annual meeting was also held with CIW. The NWSB responded to the request from CIW in relation to the Effectiveness of Children's Safeguarding Arrangements in Wales. During the meeting we presented the key themes from practice reviews in North Wales.



The Police Crime Commissioner attended the NWSCB meeting during the year and highlighted key themes from NWP perspective.



The NWSB continues to hold an annual meeting with the Cheshire West Safeguarding Board. We will be looking at undertaking a Joint audit in relation to children placed into North Wales from Cheshire West.

5.0 Any requests the Safeguarding Board has made to qualifying persons under section 137(1) of the Act for specified information and whether the requests were complied with.

None. The Board have been successful in obtaining information without having to resort to this measure by way of clear communication with the respective agencies, in particular those that do not meet the criteria of 'qualifying persons' under the Act.

6.0 Achievements of the Safeguarding Boards during the year.

Completion and Publication of Regional Polices and Guidance

A number of key projects were completed in 2021- 22, culminating in the publication of numerous key regional practice guides.

Multi-Agency Practice Guidance for Dealing with Cases of Domestic Abuse to Safeguard Adults with Care and Support Needs.

This practice guide provides additional guidelines to assist North Wales Police, the local authorities and where appropriate health services to work together to address the issues of Domestic Abuse where they affect adults with care and support needs.

The practice guidance was developed in response to concerns from a practice review and a Domestic Homicide Review around the concern that the individual subject to Domestic Abuse had not been considered an Adult at Risk.

 [Multi-Agency Practice Guidance for Dealing with Cases of Domestic Abuse to Safeguard Adults with Care & Support Needs](#)

Professional Curiosity in Adult Safeguarding

Professional curiosity is an emerging theme in the APRs and other reviews completed in North Wales, and this finding is reflected nationally. It has long been recognised as an important concept in Children's Services, but is equally relevant to work with adults.

 [Professional Curiosity](#)

Languaging Child and Young Person Vulnerability

When we describe children and young people's experiences, any language that implies that a child, young person, or group of young people are complicit or responsible for the exploitation they may suffer or crimes that may be victim of, should always be challenged.

Our language should always consider a lack of agency or ability to control situations and should recognise and be responsive to trauma resulting from the harm they have experienced. Failure of support services to make these considerations may contribute to the continuing victimisation of children and young people and prevent young people and those that care for them from accessing help.

This guide has been created to support staff, practitioners, professionals and partner agencies working with children, young adults and families and the community to language child / young adult vulnerability with specific reference to Child Sexual Exploitation (CSE) and Child Criminal Exploitation (CCE).

 [Languaging the Child and Young Person Vulnerability](#)

Capturing the Daily Lived Experience of Children, Parents and Carers

Sharing daily lived experiences of a child/ parent/ carer (care giver will be used through this resource going forward) enable professionals working with and supporting families, to understand what it is like 'to be in their shoes' for a typical day.

If we are able to understand what life is actually like through their eyes, professionals will have a clearer picture of the needs that are or are not being met for the child as well as the impact of professional concern for the child. This in turn will support us to develop effective and SMART care plans to ensure the family and professionals can work together to improve the child's lived experience. The practice guide was in response to learning from practice reviews.

National Safeguarding Week and Board Conference

National Safeguarding Week activities were able to proceed virtually with Microsoft Teams and Zoom being utilised to deliver a number of workshops to practitioners across the region. Workshops were held during the week based on the thematic learning from Practice Reviews.

The following Webinars were delivered:

Learning workshops for Education and Early year providers on the Wales Safeguarding Children Procedures.

An overview of the role of the Domestic Abuse Commissioner.

- ❖ Transitional Safeguarding: adolescence to adulthood.
- ❖ The Rise and Rise of Institutional Abuse.
- ❖ Carrying out and recording capacity assessments.
- ❖ Impact of Covid 19 and what it has taught us about Adult Safeguarding.
- ❖ Child Sexual Abuse –Latest Research.
- ❖ Working with fathers in child protection safeguarding Children living with Foster Carers /Adopters/Special Guardians.

In November 2021 during Safeguarding week, the NWSB held its annual safeguarding conference, the theme of this year's conference was celebrating good practice.

The following examples were given:

Gwynedd Council: Establishment and work of the Emrallt Team focus on Harmful Sexual Behaviour

Wrexham County Borough Council: Multi-agency partnership working, and coordination of care and support planning with the Multi Systemic Therapy Team.

Conwy County Borough Council – Conwy response to tackling Child Sexual Abuse, a multi-agency initiative

Anglesey Council: Trauma Informed Island.

- ❖ BCUHB – Trauma Risk Management (TRIM)
- ❖ Probation – MAPPA Case Study

[Virtual Board Development Day](#)

The Virtual Board Development day took place in February 21. We completed the Self-Assessment Improvement toolkit and reviewed the risk register. The outcome of this development day included:

In relation to the new Business Plan 22-23 we will be focusing on learning from Child Practice Reviews/ MAPFs/ National Child Practice reviews and the two Serious Case Reviews in England.

The initial findings from a thematic analysis of young person's cases in North Wales where the young person who has had involvement with services within the previous 12 months, has displayed acute self-harming behaviour has identified a number of areas of learning.

We are reviewing the current pressures in relation to Unregulated Placements / placement demand.

- ❖ From the SAIT – it was identified the NSWCB need to do further work on CSE as part of the wider CSA national action plan.
- ❖ From last year's Business Plan- we will have to roll out training on Section 5 in the summer whilst we await the updated WSP Project Board Task and Finish group work in June 22.
- ❖ As part of the SAIT – we are struggling to identify reviewers and chairs for Child Practice Reviews. This is a particular pressure point with the increase of CPR referrals.

Our priorities for the 22-23 include the following:

- ❖ To respond effectively and embed the learning identified from Regional Adult / Child Practice reviews, Regional Multi-agency professional's forum and the National and UK reviews. (NWSB).
- ❖ Effective engagement and communication: To improve engagement and consultation with children and adults at risk, vulnerable groups, professionals and partnerships (NWSB).
- ❖ To support the implementation of new legalisation in 2022 including End Physical Punishment and Liberty of Protection Safeguards alongside responding to national action plans on Child Sexual Abuse and preventing abuse of Older People. (NWSB)
- ❖ To continue to ensure a robust, resilient and consistent approach to safeguarding practice during the Covid-19 pandemic (NWSB).

Continued Response to Covid19

We continue to track the impact of Covid-19 via the delivery groups. We received a presentation on the Impact of Covid-19 by Dr Laura Pritchard Jones from the University of Keele. We will be able to identify that one of the areas we had not noticed before was the number of re-referrals during lockdown. We also identified the need to continue to promote Carers assessments in the region.

We continue to track the impact of Covid-19 via the delivery groups. We received a presentation on the Impact of Covid-19 by Dr Laura Pritchard Jones from the University of Keele. We were able to identify that one of the areas we had not noticed before was the number of re-referrals during lockdown. We also identified the need to continue to promote Carers assessments in the region.

The re-referrals during Covid19 will be a focus of audit work.

We continue to promote the Covid19 webpage. The webpage has a range of resources to support the general public and for practitioners.

Comments received regarding the website include:

- ❖ I have accessed your Regional Board Website and looked at your 7 Minute briefing section, which I have to congratulate you on. I am currently updating our Health Boards Safeguarding Intranet site, and whilst we have some of our own 7 Minute briefings, we have a bit of a way to catch up with yourselves.
- ❖ Amazing to see all these wonderful support resources and services available in one place. This will certainly help anybody suffering abuse, looking to report, refer or advise individuals in an abusive situation, gain access to the right services that can support their individual needs quickly.
- ❖ A great collection of support networks and how to make contact, easy to navigate and understand. Essential during these stressful times and of course beyond.

7.0 The extent to which each member of the Safeguarding Board contributed to the Board's effectiveness.



Betsi Cadwaladr University Health Board

Director of Safeguarding & Public Protection (Vice Chair) North Wales Safeguarding Adults Board.

Head of Safeguarding Children is Chair of Conwy & Denbighshire Children's Practice Delivery Group.

Safeguarding Practice Development Lead from Corporate Safeguarding led on the work around delivering the most recent Joint Investigation training in the region

Attendance and contribution to all NWSB Sub Group. The support from the Health Board has been essential in relation to the completion of practice reviews

The Corporate Safeguarding team have increased organisational awareness of the correlation between falls and Adult at Risk reporting. This has been achieved through attendance and presenting at key Governance meetings within the organisation, and along with individual, group and ad-hoc adult safeguarding supervision

The Corporate Safeguarding Team have reviewed all learning from falls and have been working collaboratively with internal services and collaboratively with external agencies to develop a falls training programme that reflects the content and requirements of the Wales Safeguarding Procedures 2019.

Funding has been received from the Ministry of Justice (MOJ) to pilot two hospital based IDVA, one in Ysbyty Glan Clwyd (YGC) and one in Ysbyty Gwynedd (YG).

These posts will be managed by the Domestic Abuse Safety Unit (DASU) and Gorwel but will sit within BCUHB Corporate Safeguarding Team.

The Hospital based IDVA will provide immediate, high quality, trauma informed support and advice to victims of domestic abuse accessing YGC and link survivors to longer term community-based support. The hospital based IDVA will work closely alongside hospital staff, providing expert advice and raising awareness to support the disclosure of domestic abuse.

The role involves empowering survivors to increase their options, make positive choices/decisions, increase their confidence, safety and recovery.

The central IDVA commenced in post in February 2022 and her presence is growing from strength to strength. The west IDVA is expected to commence in post in May 2022. The pilot will be evaluated.

Good Practice Example

Children (Abolition of Defence of Reasonable Punishment) (Wales) Act 2020

Corporate Safeguarding have been proactive in raising awareness / training regarding the new Act.

This has now been achieved by proactively establishing a Strategic Steering Group which included all the relevant members from service areas within BCUHB, and developing an implementation action plan. Key actions included: -

- ❖ Sharing Welsh Government resources via the BetsiNet - Safeguarding webpage.
- ❖ Developing a 7-minute briefing.
- ❖ Highlighted information in Safeguarding Bulletins.
- ❖ Ensuring child at risk training packages have been updated to reflect this historic change in legislation.
- ❖ Ensuring the information was raised in Safeguarding supervision across Q4 (2021/22).
- ❖ Ensuring members of the group disseminated the information within their service areas and updated the strategic group of any challenges.
- ❖ Chair of the BCUHB Strategic Group attended the National Meeting and shared all relevant information across BCUHB

The Quality Assurance Service Manager from Children Services has played a significant role in supporting the Child Practice Review sub group. In addition, two safeguarding officers from the authority are reviewers for current Child Practice reviews.

Service Manager from Adults is also the Chair of the Adults Local delivery. The Local Authority have demonstrated a commitment to learning from reviews by investing resources into learning events.

Working within the changing restrictions we continued to respond to children and their families as individuals in unique circumstances. We adapted quickly to new ways of working and through use of information technology (IT) enhanced how we communicate with people who use services and other professionals.

The user perspective in terms of virtual child protection conferences was sought and the initial findings suggest that there is a positive base on which to build a hybrid model of conferencing when restrictions are again eased. Users told us that Virtual conferences generally worked fine. Some preferred this model, as long as everyone had video capability. The main message was that individuals felt that they were treated with dignity and fairness. The intention is to maintain some of the new ways of contacting people and maintaining communication through IT even as more opportunities for face-to-face working returns.

Over the last few years we have established a dedicated team of 2 Full time Best Interest Assessors. Both are experienced and skilled practitioners. We have worked hard to reduce the waiting list for Dols assessments and COP DoLs. The Local Authority has maintained capacity over establishment via an agency worker: providing a valuable interim arrangement: bringing experience and energy, resilience and capacity as the applications for Dols assessments and reviews grew. We have taken advantage of opportunities for additional funding in order to increase capacity (via agency of third party sourced BIAs) tackle the waiting list for standard authorisation.

CIW Feedback

“there was evidence of good understanding and effective implementation of The Wales Safeguarding Procedures in relation to children and young people at risk of harm. We saw evidence of statutory requirements being met, effective partnership working to safeguard children, and evidence of good analysis to assess the level of risk.”



[Conwy County Borough Council](#)

Strategic Director of Social Care & Education is Chair
NWSCB. Learning and Workforce Development Manager is
Chair of Joint Workforce Development and Training Group.

Conwy also provide the Legal Advisors for both Boards.

The local authority has representatives at all the relevant sub groups. The support of the Safeguarding Service Manager has been essential in ensuring learning from internal case reviews has been shared across the region.

Conwy has now established the MASH team with Phase 1 commencing in June 2021, during the pandemic. The team works virtually and initially focus has been to embed adult safeguarding. In November 2021 we introduced Children service into MASH.

Working collaboratively with North Wales Police has not only allowed for swift information sharing but it has also offered the opportunity for both agencies to assess the risk and concerns and make joint decisions as well as given consideration to offering co-ordinated intervention. MASH has allowed for **Informed decision making** and **Reducing delays**, due to there being a dedicated Team Managers and Social workers working alongside the DS and Police researcher has resulted in the immediate sharing of information on receipt of a referral/report. MASH oversight of the CID16s and Safeguarding reports has also provided an opportunity to identify 'repeat' concerns for the same individuals.

The current Data captured by the MIS team shows **an increase in the timeliness** with which safeguarding reports are being screened. This is as a result of the streamlined approach to gathering the relevant information and the ability to undertake swift strategy meetings with the MASH Detective Sergeant.

The MASH team are now moving into Phase II where we hope to have our key partners on board these include Health, Education, Housing, Public Protection, Probation and Youth Justice Service.

Good Practice Example

Following information being received from NWP and the National Modern Slavery Helpline in September 2021, it became apparent that there were concerns that a private newly formed Social Care Agency operating in the Conwy area were providing agency care workers who presented as being potential victims of modern slavery. In response to these concerns, full multi agency strategy meetings were convened with key partners including Health, North Wales Police, CIW and Denbighshire Council.

Initial meetings were covert and sensitive to the fact that any poorly timed enquiries or interventions would have jeopardised potential police enquiries and investigations. At this time the case continues to be under investigation by the Gangmasters and Labour Abuse Authority (GLAA), so actions below highlight work undertaken to date by the local authority and its partners.

Actions undertaken across agencies to date include:

1. Enquiries with providers and care homes of their use of the agency in question, initially via covert and sensitive means.
2. Communication with all providers to remind them of their duties and be mindful of ensuring that safe recruitment practices are always followed when utilising agency staff.

3. Maintained safeguarding oversight of care homes in the area to ensure that, as far as possible, residents were not placed at risk as a result of the agency staff who were providing care.
4. Ensuring that MASH team colleagues were fully briefed and given pointers on how to gather specific safeguarding concerns in the initial phase.
5. Partners working closely when the GLAA began their operations.
6. Undertook clear actions with support from the Vulnerable People's Team to support and advise the victims in the case.
7. Initiate and progress Section 5 Position of Trust meetings.
8. Undertook debrief session to gather learning from the process

Whilst the process was challenging and something many of the practitioners involved had never operationally had to deal with before, the process provided key good practice and learning opportunities:



[Denbighshire County Council](#)

Corporate Director: Communities attends both the NWSCB and the NWSAB.

The Service Manager for Safeguarding and Practice Quality is the Chair of the Children's Policy and Procedures group

The local authority has representatives at all the relevant sub groups.

Pre-birth Liaison Meetings – This has been a new initiative developed by the Managers within the Intervention Service to review pre-birth assessments. This is a multi-agency meeting with leading Health practitioners and partners to monitor and review pre-birth assessments open to Denbighshire. The aim is to work collaboratively in relation to pre-birth cases ensuring that support services are offered in a timely manner to combat safeguarding concerns and prevent escalation into statutory processes. At the Conwy & Denbighshire Local Delivery Group the Safeguarding Midwifery Lead, shared the initiative to the group. Neighbouring authorities have expressed an interest to do something similar.

Quarterly quality audits continue to be undertaken in respect of Adult Safeguarding. There was evidence that the individual or their representative was supported and involved in understanding or reviewing the outcomes of the safeguarding process and advocacy was considered and engaged when required. Personal outcomes were at the centre of the solutions

Good Practice Example

There have been significant challenges regarding ASB in Rhyl, some of this behaviour was linked to CSE concerns and involved a specific group of young people. Close and sustained joint working with our colleagues in NWP, Youth Justice and Youth Services has resulted in positive changes for the majority of these young people.

This was a complex and wide ranging issue, by working together to share information and develop joint plans to engage this group we have implemented change and effectively safeguarding these young people. Joint working has also allowed us to reassure the community, local businesses and Members that a cohesive approach to tackling these issues was ongoing. Whilst there is still work to do on the issue there has already been a positive impact for a number of young people.



Flintshire County Council

Chief Officer Social Services is Chair of the North Wales Safeguarding Adults Board.

Senior Manager Safeguarding & Commissioning is Chair of Flintshire & Wrexham Safeguarding Adults Delivery Group.

The local authority has representatives at all the relevant sub groups.

During 2021/22 we explored how we expand our MET (Missing, Exploited or Trafficked) processes to incorporate the principles of contextual safeguarding. Following research, mapping exercises and consultation with partners we have developed proposals that build on our Early Help Hub model. The proposed model will provide a multi-agency approach to support, develop and oversee interventions that increase welfare and protection aligned to harm/risks arising outside of the family home. The model has been designed to identify, monitor and challenge the effectiveness of activities to address the harm/risks and consider:

- ❖ Key Safeguarding concerns.
- ❖ Peer / area mapping (ECO MAP).
- ❖ Locations and contexts of concern.
- ❖ Intervention plan.
- ❖ Review Date.

The Adults at Risk team in Social Services worked closely with colleagues in other departments and agencies to identify people who might be most at risk of “falling between the cracks” – those who do not receive domiciliary support and who may be less able to adapt and adjust to new ways of living during a time of crisis. Once identified, people were contacted and their care and support needs were assessed.

The client information system triggers the need to consider advocacy during the strategy

discussion and s126 enquiry stage. Independent advocacy is always considered in absence of a suitable family member advocating on behalf of an individual person.

Good Practice Example

Theatr Clwyd and partners Flintshire Social Services were 'highly commended' for their project Lleisiau Clwyd Voices of the Future which took place between February 2021 – June 2021. The recognition was made by Social Care Wales annual Accolades.

Lleisiau Clwyd Voices' was established as a longer-term experiment into the future possibilities and sustainability of this working relationship. The project was funded by the Arts Council Wales, through a Connect & Flourish grant.

Young people were self-selected and referred by Social Services from across Flintshire. Many have difficult home lives, are young carers or have additional learning needs. Ten local freelancers were employed from a variety of disciplines: actors, a visual artist, a choreographer, a musician, a director, a singer, a fight director, a writer and two stage managers.

Lleisiau Clwyd Voices had a significant impact on the lives of the young people and artists involved. Both groups recognised the benefits it brought to their general well-being and mental health. Whilst the lockdowns resulted in loneliness, depression and anxiety about the future, the project enabled social connection by safe in-person creative activities. This provided a sense of hope, positivity, and escapism for both groups.



Gwynedd County Council

Both the Head of Services attend the respective boards.

The Head of Service (Children's) has continued to represent the Board in relation to the National Project Group developing the Wales Safeguarding Procedures.

The local authority has representatives at all the relevant sub groups.

The VARM has been established in Gwynedd within the last year. It is an effective forum for discussing individuals who would not meet the criteria for safeguarding but who are vulnerable within our communities.

Effective Child Protection is a model of practice developed in Gwynedd to improve practice in child protection. It has been supported by the North Wales Regional Transformation Board as a practice innovation with the potential for roll out in other areas. The project has been evaluated and judged to have been successful in developing new approaches to child protection. It brings together several elements of good practice and uses the role of a Practice Mentor to embed new skills and training into practice.

Good Practice Example

Names have been anonymised.

Katie is 11 years old. She lives with her grandparents who live close to her mother, Sheena.

Katie's mother came to the attention of Social Services because she was dealing in drugs. She was arrested carrying drugs in the car. She was under the influence when stopped and Katie was in the car.

Sheena was using substances, dealing, and was taking Katie with her from house to house. There was no consideration for Katie's safety. Their relationship was very difficult with Katie's mother blaming her for things and saying hurtful things when she was under the influence of drugs. The care provided was inconsistent, placing her at risk of physical and emotional harm. She has lived with her grandparents for several months.

At the Initial Child Protection Case Conference three areas of change were identified. These were linked to reducing the risk of significant harm. The main focus was for Katie to have a safe relationship with her mother. There were three actions that contributed to this. For Sheena to place Katie's needs before her own, for her to work with a substance misuse worker and to be honest with agencies.

As part of the work of the Core Group, Sheena and Katie were involved in exploring the areas of change and what steps needed to take place for care to be 'good enough.' They broke things down into manageable steps. At the beginning, Sheena did not accept that her behaviour was placing Katie at risk or that her words and responses were hurtful and were affecting Katie.

Over time, the relationship with the social worker developed and trust increased. This allowed the child protection work to progress with a focus on change. For the mother, being clear about the areas that needed to change bought a level of clarity. She knew what was expected of her. She took an active part in the Core Group and in how her 'Steps to Change' was developed.

For the child, she was able to use those same tools in sessions with the social worker to talk about how these changes were translating to her real life experience and that things were getting better from her perspective. She was an active part of the child protection plan even though she didn't attend the Core Group and was able to help define what would be 'good enough' care.

The 'focus on change' identified clearly what needed to change to reduce significant harm. The 'Steps to Change' tool was used to structure the 'change talk' with Sheena and the scoring helped ensure that progress was made to 'good enough' care. Through Katie's active part, we were also able to check that these changes were resulting in improvements in her experiences day to day; not just the mother's account of how she perceived the situation.

The mother said: "It laid it out simply, simple to follow" and "I knew exactly then what to do to improve my score and achieve those goals we set out in the plan... everyone could follow it easily...it made me feel empowered."



Wrexham

Director of Social Services attends both the Adults and Children's Board.

Head of Service, Adult Safeguarding and Mental Health is representing the NWSAB on the proposed Task and Finish group on Section Five of the procedures.

Head of Service for Children Services is also the Chair of the Children's Local Delivery Group.

The local authority has representatives at all the relevant sub groups.

To strengthen safeguarding arrangements in our Single Point of Access (Children's SPOA), a project to introduce dedicated police presence within SPOA has been established and is near completion. The project identifies a Detective Sergeant and Police Researcher having virtual or in-person presence in SPOA. The purpose of the project is to strengthen partnership working and communication between North Wales Police and Children's Services and will ensure that Strategy Discussions and Strategy Meetings are held in a timely and efficient manner.

Adult Social Care have experienced an increase in contacts/referrals involving self-neglect and hoarding which has resulted in the Adult's SPOA (Single Point of Access) becoming more proficient and draw from the regional policies in complex self-neglect cases, some cases which have had to have the support of colleagues in Legal Services and resulted in challenges made to other agencies.

Good Practice Example

The work of the Adult Safeguarding Team and their proactive approach in identifying themes and trends in contacts/referrals of Adult at Risk has led to the early identification of increased referrals from a particular provider. The team held a Service of Concern meeting with senior members of the provider's organisation to address the pattern of these concerns, remedial actions were undertaken and as a result, the team were commended on their practice by the inspectorate and multi-agency partners.



North Wales Police

Detective Superintendent Protecting Vulnerable People Unit (Vice Chair) of the NWSCB and also attends the NWSAB.

A number of officers from the unit are chairing practice reviews on behalf of the NWSB.

Police Crime Academy Workforce Officers have supported the NWSB in the delivery of the Joint Investigation Training and Achieving Best Evidence courses.

Attendance and contribution to all NWSB sub groups.

Peer Audits have improved the quality of Adult at Risk investigations. Repeat Demand meetings have been introduced through the organisation with partnership agencies which has enabled safeguarding to be addressed in a timelier and productive manner. Fraud triage has provided a single gateway for all reported frauds to North Wales.

Training sessions have also been much more accessible. For example, we have recently run an online PRUDIC training event delivered by 2 Wish. This saw a number of partner agencies log on and attendance of around 60 people. It was also beneficial as the training was recorded and therefore allowed the possibility of sharing the training with those that couldn't attend. They were able to watch at their convenience which increased the target audience further.

An increase in multi-agency training has seen an increase in collaboration and "team bonding" as well as agility allowing shared working spaces to increase working relationships and problem solving. The Conwy MASH pilot has been a case in point.

Good Practice Example

Engagement Activity undertaken by forces, ensure children have a voice. The voice of children and young people are actively sought to inform local policing

Young Persons Advisory Group - The Youth Advisory Group model has now been

presented to the Senior Leadership Team and received full approval. The Terms of Reference for the group has been drafted awaiting review. Work is now being undertaken to progress recruitment for the Youth Ambassadors.

Young Persons Engagement Forum - The Chief Constable and PCC have now met with 2 x groups of 6th form pupils in both Conwy and Gwynedd, a third session with 6th Form pupils from Prestatyn High school has been arranged for July prior to the end of this academic year. The Chief and PCC have agreed that the remaining 3 counties will be planned in for the next academic year.

North Wales Community Alert - North Wales Talking - launched in March to identify the top three community issues for each district. This supports the Neighbourhood Policing Strategy which forms part of the PCC's Police and Crime Plan and quarterly local priority setting. We now over in excess of 9000 people signed up to the Community Alert and there continues to be a focus on increasing that engagement across the districts. 3000 surveys were completed and we seek to increase on this figure. We now have clear priorities set in each district set by the community which the districts are working on and reporting back to the community via Community Alert.

Mini Police Programme - 6 x primary school will commence the Mini Police Programme of sessions after Easter – 1 school per county. The remaining 6 locations will be starting in the next Academic year with their new year 5 pupils. An activity book has been finalised and will be given to all children participating on the scheme, it will provide the children the opportunity to include the views of their friends and family in the Mini Police programme and provide parents and carers with updates of the work being carried out.

Youth Engagement Officer - The Youth Engagement Officer and School Police Officers have been carrying out consultation sessions with young people in local colleges and 6th

form groups to obtain views/concerns and lived experiences around VAWG – Linking in with RASASC Wales, TACTA Training and Bangor University providing feedback to support the new educational package The 'Don't Steal My Future'.

The lesson is a step closure to delivery, the facilitators training is scheduled for 12th April and a proposal to pilot the sessions in two 6th form locations in early May.

Gwasanaeth
Prawf
Probation
Service



Probation Service

Head of Local Delivery for North Wales Probation Service attends the NWSCB and tries to ensure relevant attendance at the Adults Board.

The National Probation Service delivered activity via 'Exceptional Delivery Models', these covered all aspects of our probation delivery to ensure that any operational disruption was minimised.

The underlying principles of the EDMs were to ensure a clear focus on public protection and the management of our most dangerous and complex cases, whilst also ensuring the safety of our staff, service users, victims and the public.

Inspection Feedback

The continued delivery and improvement of the **MAPPa Framework** during the past 12 months represents a key achievement for the Probation Service and its key strategic partners.

A recent joint HMIP / HMIC Thematic on MAPPa carried out in North Wales identified a number of good practice areas and commented on the strong working relationships in discharging our statutory duties.



Care Forum Wales

Chief executive of Care Forum Wales attends North Wales Safeguarding Adults Board and contributes to NWSAB Policy & Procedures Group.

CFW representatives are active members of the NWSAB Safeguarding Adults Delivery Groups across the region.



Barnardo's & NSPCC

Both organisations have provided invaluable support to the NWSCB. Barnardo's Board member is also Chair of the Child Practice Review Group

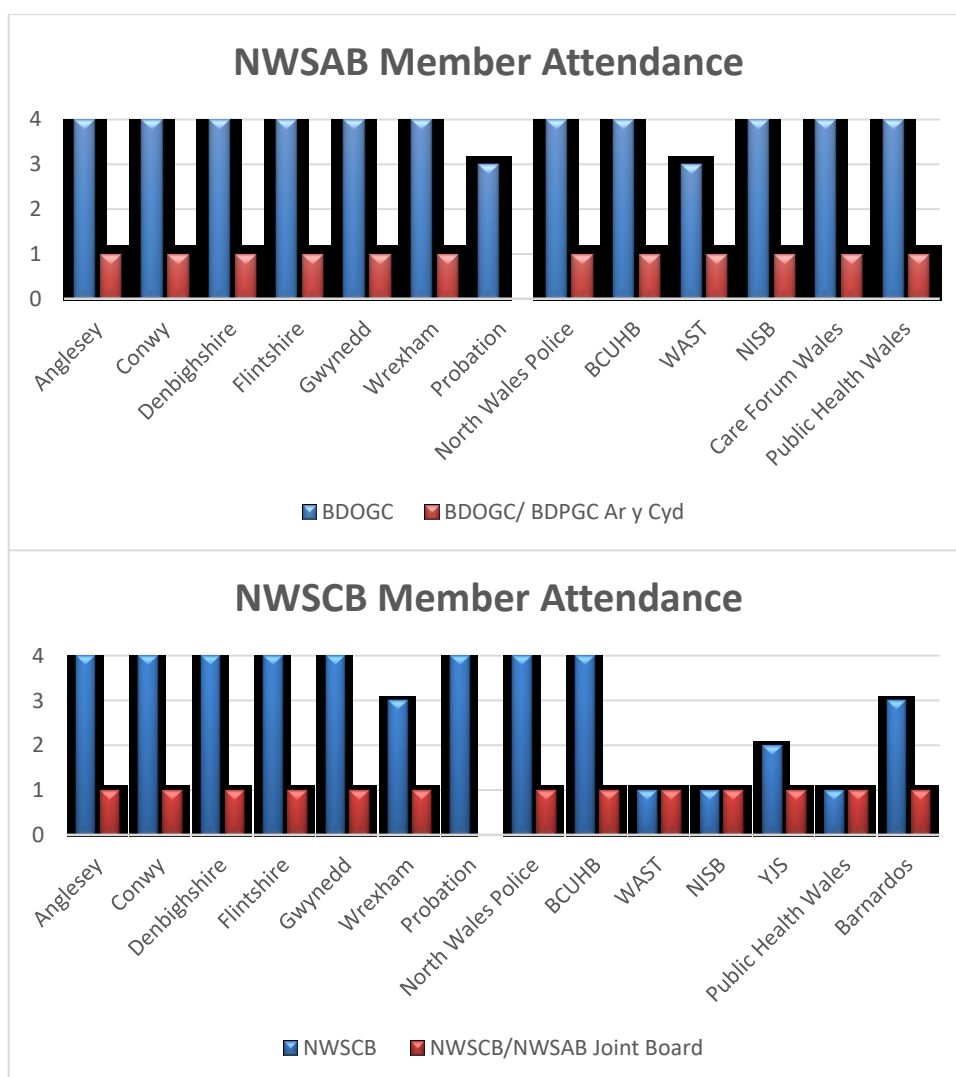


NSPCC also assisted in providing training in respect of the Wales Safeguarding Procedures highlighting the changes in practice regarding Safeguarding Children.

7.2 Board Attendance:

The Business coordinators have continued to track attendance at the Board meetings and also at the sub groups. We have continued to see good attendance at Board meetings. We acknowledge that it was not always possible due to the work demands for senior officers to attend Board meetings but another representative from the organisation unable to attend would deputise.

Board attendance from April 2021 to March 2022



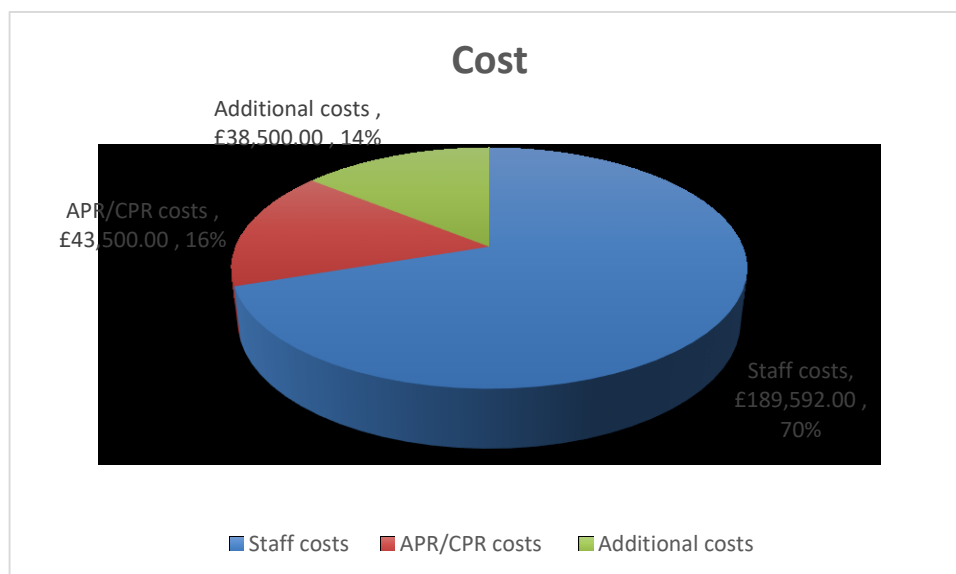
8.0 An assessment of how the Safeguarding Boards used its resources in exercising its functions or achieving its outcomes.

Funding

The North Wales Safeguarding Board has used the National Funding Formula to assess

and identify annual funding from statutory board partners. The pie chart below illustrates how the board has made use of the financial resources within the context of income and partnership contributions.

Expenditure 2020/21 Total: £ 271,592.00



The Business Unit

The bulk of the expenditure has gone on staffing costs. We do note that we did have a four-month period without a Safeguarding Administrator. We have found it difficult to fill this vacancy. This has placed some additional pressure on the unit, as often Business Coordinators have taken on the administrator role.

North Wales Safeguarding Board Business Manager		
Business Coordinator NWSAB	Business Coordinator NWSCB	Regional Safeguarding Administration Officer

Child / Adult Practice Reviews

In this year's report we have included the cost of commissioning reviewers to undertake practice reviews and also MAPF's. Due to the current pressures on the workforce, we have found it difficult to engage in-house reviewers in the region. We did commission a further in-house training course for reviewers.

During the year we had the following levels of activity in relation to reviews:

Number of Child Practice Reviews commissioned during 21/22	Number of Child Practice Reviews published during 21/22	Number of MAPF's undertaken	Key themes
4	0	2	<ul style="list-style-type: none"> ❖ Parenting Capacity ❖ Disguised Compliance ❖ Lack of suitable placements ❖ Considering the voice of the young person ❖ Understanding the child's needs; the needs of a child self-harming, the needs of a child potentially being bullied ❖ Disengagement with services; missing appointments/ school ❖ Parental mental health ❖ Working constraints during the pandemic ❖ Large sibling groups ❖ Multi-agency Communication and Documentation ❖ Neglect/ home conditions

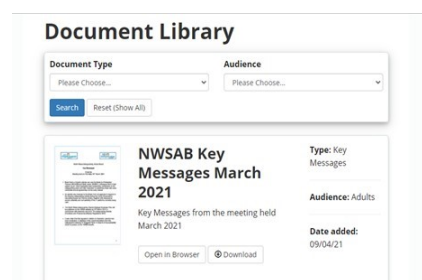
Number of Adult Practice Reviews commissioned during 21/22	Number of Adult Practice Reviews published during 21/22	Number of MAPF's undertaken	Key themes
1	0	1	<ul style="list-style-type: none"> ❖ Transition from Childrens Services to Adult Services. ❖ Episodic interventions from agencies. ❖ Awareness of individual's history in relation to risk with regards to sexual and criminal exploitation. ❖ Parental drug and alcohol use. ❖ Languageing the child/young person. ❖ Lack of analysis of decision making.

[North Wales Safeguarding Board Website](#)

The Safeguarding Boards website continues to harness resources to keep practitioners and the public updated with regards to impending policy changes, new support helplines, and general information gathered from across Wales and the rest of the UK.

[NWSB Key Messages](#)

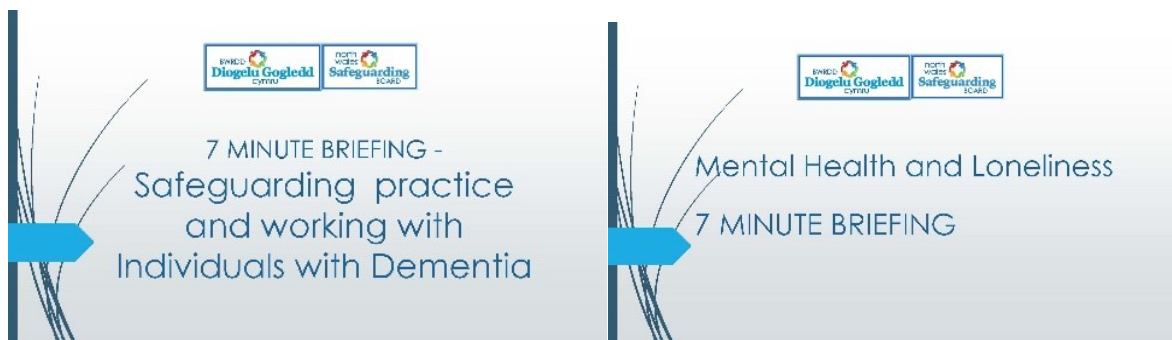
Key messages from the North Wales Safeguarding Board meetings have also continued to be made available via the resources library, together with the published annual report for last year and the NWSB Business Plans for 2022/23.



7 Minute Briefings

The use of 7 minute briefings to highlight issues and themes throughout the year proved to be very successful. In total there are 160 briefings currently available on the website.

A number of briefing were created for particular National Themed weeks. For example, during Mental Health Awareness week and Dementia Awareness week we created the following 7 minute briefings.



North Wales Safeguarding Board Resources - 7 Minute Briefings.

During Safeguarding Week, we had over 1,000 hits on the website.

Another development we have now created is the use of '[Z Cards](#)'. Practitioners across North Wales are able to access a number of Z cards on safeguarding practice.

9.0 Any underlying themes in the way the Safeguarding Boards exercised its functions as shown by an analysis of cases it has dealt with, and any changes it has put into practice as a result.

Following a presentation from Dez Holmes during safeguarding week, the NWSB undertook a learning review around Transitional Safeguarding. It had been highlighted previously that we had a gap in services in relation to the transition process from being a Child at Risk to moving into adulthood as a potential adult at risk.

The purpose of the learning review was:

To focus on the 'transition arrangements' for a young person identified as being at risk of exploitation and having significant issues moving into adulthood.

- ❖ Prior to the young person becoming 18, had services understood the level of risk and the level of support that the young person would need going forward into adulthood?
- ❖ Identify the areas for improvement/good practice for all agencies around the transition process when working with a young person at risk of exploitation and significant emotional health issues, particularly the Local Authority and CAMHS.
- ❖ Were the young person's views reflected within the transition process.
- ❖ Did services respond effectively regarding the safeguarding concern highlighted post

The key themes that were identified included:

Difficulties for young people in addressing substance misuse can be compounded if their parents are also misusing substances. Effectivemanagement of a child or adolescent substance misuse encourages the involvement of parents or carers. If they are not available, or if their behaviours are likely to exacerbate rather than improve a child's substance misuse, that should beviewed as a risk rather than a protective factor.

In response to this key theme, the NWSCB have undertaken further work on updating the Supporting Children Supporting Parents NWSCB regional practice guidance - Parents with severe mental health problems and/ or substance misuse. We will also be holding a series of workshops in the summer of 2022.

Use of language. An agency uses the term ' risk-takingbehaviour has escalated, the child is misusing drugs and placing themselves at risk of CSE'. Although this language is commonly used, it suggests choice and agency on behalf of the child. That can serve to diminish the responsibility of adults to safeguard a child and against the predatory behaviour of those who seek to abuse and exploit.

The development of the practice guide “Languaging Child and Young Person Vulnerability” was created to support practitioners. When we describe children and young people’s experiences, any language that implies that a child, young person, or group of young people are complicit or responsible for the exploitation they may suffer or crimes that may be victim of, should always be challenged.

Overall from the learning from this learning review, the NWSB is currently consulting on a draft Transitional Regional Practice Guide.

[Response to the findings from the thematic analysis of Adult Practice Reviews in Wales](#)

This research project was commissioned by the National Independent Safeguarding Board (NISB) (via Welsh Government) to push forward the intellectual agenda and learning that can be achieved from a systematic analysis of Adult Practice Reviews (APRs).

Due to the serious concerns that the report had highlighted in relation to Adult Safeguarding in Wales, the Board requested a response to the report and updates over this year from the Local Delivery Groups.

In response to the five key themes and 15 recommendations, the NWSAB have undertaken the following actions:

[Theme 1 – Safeguarding](#)

The Board’s Workforce Development and Training Group together with the Business Unit started planning training sessions for Staff and Providers from July 2019 once it was established that the procedures would be launched later in the year. By asking the regional training officers to identify who would need to attend the first tranche of training, those who are on the front line and have the immediate need to understand the changes identified within the

Wales Safeguarding Procedures attended a full days training.

We have held 13 learning events on the Adult Safeguarding Procedures. Each event had over 40 practitioners per session. Due to Covid-19 restrictions, we have developed Adult Safeguarding Videos on the Adult Safeguarding module which is available to all boards on the Social Care Wales Website.

We have further developed a learning workshop on Person Centred Practice and Adult Safeguarding during this year. In addition, we also had the Wales Safeguarding Procedures audit being undertaken by all statutory agencies in the region.

We have also changed the Adult at Risk performance template for Local Delivery Groups.

The template covers the following issues:

- ❖ Performance Information.
- ❖ Quality Assurance and Improvement.
- ❖ Section 5 Data and Issues.
- ❖ DOLS/LPS.
- ❖ Escalating Concerns.
- ❖ Work done around Board Priorities.
- ❖ APR/MAPF Updates.

Theme 2– Commissioning and Inspection

Regional Escalating Concerns draft protocol is now close to completion:

We continue to track the availability of safeguarding training courses for care providers and also promote the use of the updated E-learning Wales safeguarding training

Theme 3– Transitions

As highlighted we are currently consulting on the draft NWSB Transition practice guide.

During Safeguarding Week, Dez Homes from Research in Practice presented to practitioners on Transitional Safeguarding.

Theme 4 – Voice of the Vulnerable Person

Work has taken place with the Regional Advocacy Services to ensure the voice of the Adult at Risk is captured within the safeguarding process. Poor practice to be escalated to the NWSAB

The Person Centred Practice and the Wales Safeguarding Procedures training took place across the region

Theme 5 - Carers and Family

We have focused on the need to promote the NWSAB practice guidance on dealing with a person with a different point of view practice guidance

We are also promoting Professional Curiosity guidance document and hold a training event during safeguarding week 22.

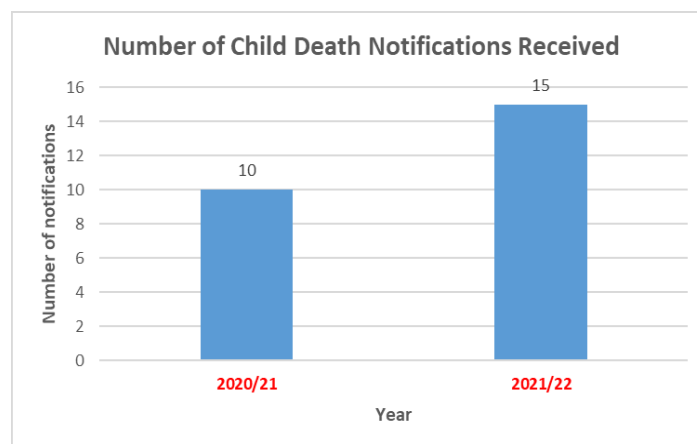
The Annual PRUDiC Report

The Public Health Wales PRUDiC procedure sets a minimum standard for a response to unexpected deaths in infancy and childhood. It describes the process of communication, collaborative action and information sharing following the unexpected death of a child.

The NWSCB monitor the PRUDiC processes initiated in North Wales and ensure the procedural response is followed to completion.

The NWSCB Business Unit:

- ❖ Receive the Child Death Notification (Appendix 5) from the Police following the Case Discussion Meeting.
- ❖ Receive the Case Summary Template (Appendix 6) from the Police following the Case Review Meeting.
- ❖ Monitor the progress of each PRUDiC process and ensure that timescales are met. Any exceptions will be reported to the Board.
- ❖ Identify any key trends.



During this year, we did not identify any specific practice themes.

10.0 The number of adult protection and support orders which applied for in the Safeguarding Board area:

During this period, none of the six local authorities in the area have made any applications for an adult protection and support order. We are aware that discussions have been held with legal representatives but alternative routes have been found rather than applying for an order.

NWSAB updated the regional practice guidance in respect of APSO to reflect the names of lead / approved officers who have responsibility for applying for an order following changes in staffing in the area.

 [Adult Protection Support Orders.](#)

11.0 When and how children or adults exercised an opportunity to participate in the Safeguarding Board's work.

In relation to Adult Safeguarding, the NWSB did specific work with the Regional Advocacy Services. We commissioned Person Centred Practice and the Wales Safeguarding Procedures Training for Advocacy Providers.

As part of the Local Delivery Groups in the Region, Advocacy representatives at the meetings provide feedback from the Adult at Risk regarding their views around the safeguarding process. From the feedback collated we were able to present key messages across the region for safeguarding practitioners.

Briff 7 Munud

Cynllunio Cyfarfodydd Diogelu – Lleisiau a Disgwyliadau Dinasyddion

7 Minute Briefing

Planning Safeguarding Meetings - Citizen Voices and Expectations

2. Cynllunio Cyfarfod Diogelu

- Meddylfwrch sut y gallen nhw fod yn teimlo.
- Meddylfwrch sut y byddedn chi'n teimlo yn eu sefyllfa nhw.
- Os oes yna gyfarfod amodanyd nhw naa ydyn nhw'n cael mynd iddo – dywedwch wrthynt nhw pam.
- Cofiwch fod pool yn gwneud penderfyniadau am eu bywydau nhw.
- Ychydig ddyddiau cyn y cyfarfod, ffoniwch nhw neu anfonwch lythyr atyn nhw i ddweud beth fydd yn digwydd.

2. Planning a Safeguarding meeting

- Think about how they may be feeling.
- Think about how you would feel in their shoes.
- If there's a meeting about them that they are not invited to - tell them why.
- Remember people are making decisions about their life.
- A few days before the meeting either call them or send them a letter explaining what will happen.

In relation to Children Services, the work undertaken with the regional advocacy service was not successful regarding the creation of a Junior Safeguarding Board. Instead during the year, the NWSCB have been giving presentation to selected schools and colleges around the role of the NWSCB and key messages.

This has provided the NWSCB the opportunity to share the draft guidance of the following practice guides / 7 minute briefings and the children have added to the guidance.

Victim Blaming Language in Child Exploitation

7 MINUTE BRIEFING

What Should be Considered?

- A child is not responsible for being at risk
- A child is being sexually exploited
- An adult is facilitating this contact
- This child is being exploited for purpose of criminal gain
- A child cannot choose to be sexually exploited
- An adult is behaving inappropriately with a child

We have also had feedback from Parent's/ Carers around the key messages that families want the NWSCB to focus on. In particular, we were asked to develop some key messages around Tik Toc. Concerns had been highlighted in the schools around some videos that were circulating around encouraging violence toward education staff.

Other information to safeguard children from exploitation on-line was also developed, one

Child safety on TikTok

TikTok is a video-sharing app. Users can upload and share short videos of themselves, listening to songs or adding out comedy sketches, and add special effects. They can gain followers (fans) and browse other people's videos.

The age recommendation is 13 and above. However, you don't have to prove your age when creating an account, so younger children can still use it easily. It's most popular with under-25s.

What are the concerns:

You may have seen news reports or heard concerns about some users harassing children for nude images and videos. What should I look out for?

- User profiles which talk about 'trading' or swapping pictures/videos
- Use of emojis that are commonly considered to be sexually suggestive (such as the subeigme)
- Hashtags, such as #tracetrade, which clearly suggest the user is looking to trade illicit content
- The lyrical content of some songs – parents have raised concerns that it is not always age-appropriate

- Users cannot exchange images and videos via in-app messaging, but once they've made contact they move on to platforms to look, such as Snapchat.
- TikTok has taken steps to remove users who it suspects are soliciting underage users. However, there are still many suggestive profiles and TikTok has committed to almost doubling the number of content moderators it employs to 10,000 to address this.

What safety options are available to parents?

- Control who can view your child's videos.

- Set your child's account to 'private' so that your child can control who sees their videos or keep their content completely private. Your child will be able to approve or deny people as 'fans', and will only be able to accept messages from followers.
- Accounts are set to 'public' by default. Public profiles can be viewed by anyone.
- Even with a private account, your child's profile information can be seen by all users. Make sure your child doesn't reveal personal information on their public profile.

Make sure your child knows how to report inappropriate behaviour.

Your child can use the app to report content that makes them feel uncomfortable, including accounts, videos, comments and chats. You can too. Instructions for this are here: <http://support.tiktok.com/knowledge-base/report-inappropriate-content>

You or your child can also block fans at any time: <http://support.tiktok.com/knowledge-base/block-fans>

What else can I do?

Need more about privacy and safety on TikTok at: <http://support.tiktok.com/knowledge-base/privacy-safety>

1. Download and use the app to help you understand it
2. Talk to your child about what they're doing online, and make sure they know they can talk to you about anything that upsets them
3. Check your bank statements regularly for in-app purchases you're not happy with, and to make sure your child isn't getting around any passwords you've set up

<https://www.northwellsafeguardingboard.wales/>

example is: 15 Apps Parents should know about.

Tik Toc Z Card.

16 Apps Parents Should Know About

FIFTEEN APPS PARENTS SHOULD KNOW ABOUT

ASK FM ASK FM is known for cyber bullying. The app encourages users to allow anonymous people to ask them questions.

BUMBLE BUMBLE is similar to the popular dating app "Tinder", however it requires women to make the first contact. Kids have been known to use Bumble to create fake accounts and stalk their age.

GRINDR GRINDR is a dating app geared towards Gay, Bi and Transgender people. The app gives users options to chat, share photos and meet up based on a strict phone GPS location.

MEET ME MEET ME is a dating social media app that allows users to connect with people based on geographic proximity. As the app name suggests, users are encouraged to meet each other in person.

TIKTOK TIKTOK is a new mobile device app that allows users to create, and share short videos with very limited privacy controls. Users are vulnerable to bullying and explicit content.

+ **-** **x** **%** CALCULATOR is only a tool of course, a app used to hide photos, videos, files and browser history.

SKOUT SKOUT is a location-based dating app and website. While users under 17 years old are unable to view private photos, kids can easily create an account using a fake email address.

SNAPCHAT SNAPCHAT is one of the most popular apps in recent years. While the app promises users can have a photo/video and live disappear. New features are being added, allowing users to view content for up to 24 hours.

HOLLA HOLLA is a self-proclaimed "adding video chat" app that allows users to meet people all over the world in just seconds. Reviews say they have been confronted with social stunts, explicit content and more.

WHATSAPP WHATSAPP is a popular messaging app that allows users to send texts, photos, voice calls and video chats. Whatsapp uses an internet connection on smart phones and computers.

W WHISPER is an anonymous social network that connects users to friends, neighbours, colleagues, and even strangers. It allows users to share location so people can meet I.S.

ASK FM ASK FM is known for cyber bullying. The app encourages users to allow anonymous people to ask them questions.

BUMBLE BUMBLE is similar to the popular dating app "Tinder", however it requires women to make the first contact. Kids have been known to use Bumble to create fake accounts and stalk their age.

GRINDR GRINDR is a dating app geared towards Gay, Bi and Transgender people. The app gives users options to chat, share photos and meet up based on a strict phone GPS location.

MEET ME MEET ME is a dating social media app that allows users to connect with people based on geographic proximity. As the app name suggests, users are encouraged to meet each other in person.

TIKTOK TIKTOK is a new mobile device app that allows users to create, and share short videos with very limited privacy controls. Users are vulnerable to bullying and explicit content.

+ **-** **x** **%** CALCULATOR is only a tool of course, a app used to hide photos, videos, files and browser history.

SKOUT SKOUT is a location-based dating app and website. While users under 17 years old are unable to view private photos, kids can easily create an account using a fake email address.

SNAPCHAT SNAPCHAT is one of the most popular apps in recent years. While the app promises users can have a photo/video and live disappear. New features are being added, allowing users to view content for up to 24 hours.

HOLLA HOLLA is a self-proclaimed "adding video chat" app that allows users to meet people all over the world in just seconds. Reviews say they have been confronted with social stunts, explicit content and more.

WHATSAPP WHATSAPP is a popular messaging app that allows users to send texts, photos, voice calls and video chats. Whatsapp uses an internet connection on smart phones and computers.

W WHISPER is an anonymous social network that connects users to friends, neighbours, colleagues, and even strangers. It allows users to share location so people can meet I.S.

12.0 Any information or learning the Safeguarding Board has disseminated, or training it has recommended or provided.

Events & Training:

	Event title and brief description	Organiser
May 21	Child Sexual Abuse Prevention- Multi Agency Training As part of the National Child Sexual Abuse action plan, the training was provided by the Lucy Faithfull Trust	NWSB/ Welsh Government
Sept 21	Learning from a NW Child Practice Review for Education Due to the learning identified from a Child Practice review we held specific events for education practitioners around – disguised compliance and non-attendance.	NWSB

	Event title and brief description	Organiser
Oct 21	Missing Home –Return from Home Interviews Best practice on Return from Home Interviews and awareness on the National Practice Guidance.	NWSB
Oct 21	Promote awareness of the practice guidance pre-birth assessment Consultation on the Practice Guidance and highlighting key research that has informed the guidance	NWSB
Oct 21	Contextual Safeguarding and the Wales Legal Context The NWSB arranged two learning events for practitioners across Wales to consider how Contextual Safeguarding can be adapted to fit within the Wales Safeguarding Procedures	NWSB
Throughout the Year	Joint investigation Training/ Achieving Best Evidence The Board in response to concerns around the inexperience safeguarding workforce commissioned more Joint Investigation Training and Achieving Best Evidence training, via North Wales Police. The Joint Investigation training has taken place virtually on a rolling basis. The training is funded by the NWSB	NWSB
Feb 22	Overview of the Statutory Guidance on safeguarding children from sexual exploitation The event provided practitioners with the opportunity to reflect on the national research that informed the guidance.	NWSB
March 22	Role of the Child Practice Reviewer Due to the shortage of In-House Reviewers in North Wales, we provided more training for anyone interested in becoming a reviewer.	NWSB

13.0 How the Safeguarding Board has implemented any guidance or advice given by the Welsh Ministers or by the National Board.

The North Wales Safeguarding Board have responded to guidance and advice given by the Welsh Government and the National Board. The work undertaken in the year includes: [Implementation and awareness of the Children \(Abolition of Defence of Reasonable Punishment\) \(Wales\) Act 2020](#)

Over the last twelve months the NWSB have undertaken the following:

- ❖ Via the NWSB website – we did specific safeguarding blogs on the Act.
- ❖ Circulation of all the Welsh Government materials to both professionals and the public.
- ❖ Engage in the National Event and the promotion of the Act via the 'Advan'.



- ❖ Encourage all Board partner to promote awareness of the Act. See good practice example via BCUHB.
- ❖ Contacted all the Safeguarding Partnerships in the North West of England and Shropshire to highlight awareness of the new legislation in Wales.
- ❖ Included within the Business plan for 22/23 the need to monitor the impact of the Act.

National Child Sexual Abuse Action Plan

We have continued to respond to the National CSA action plan. It is updated via the Local Delivery Groups and we will send the final version of the plan in July 22.

Single Unified Safeguarding Review

The NWSB has representatives at all the SUSR sub groups. We continue to promote awareness by sharing the 7 minute briefings that has been created by SUSR steering group. We also had presentations delivered by Welsh Government representatives within the region.

We welcome the work that has been undertaken on the SUSR project and despite the significant challenges, we can see the benefits that have been identified.

Reducing Restrictive Practices Framework

We have identified that we do need to do more work within the region on this practice guide around promoting awareness.

Consultation on National Safeguarding Training Standards

Social Care Wales has been leading on the development of the National Safeguarding Training Standards. Representatives from North Wales have been on the multi-agency national development group as well as other groups focused on specific aspects of the work.

National Board

In relation to the National Independent Safeguarding Board, the region has contributed to the working group on the Evaluation of Integrated Multi Agency operational safeguarding arrangements in Wales. The NWSCB has welcomed the addition of the review considering the effectiveness of the MASH pilot in Conwy.

We have responded to the National Thematic report on Adult Practice Reviews. We also welcome the work around developing performance measures for Regional Safeguarding Boards.

14.0 Other matters relevant to the work of the Safeguarding Boards.

Liberty Protection Safeguards

The Liberty Protection Safeguards (LPS) consultation process is about to commence, replacing the Deprivation of Liberty Safeguards (DoLS) as the system to lawfully deprive somebody of their liberty.

The NWSAB, have had regular updates via the Local Delivery Groups regarding the number of authorisations and renewals that have taken place during the year.

We are concerned that the new legislation is going to increase the demand on both the Health Board and the Local Authorities in the region.

If we adhere to the guiding principle of Cheshire West, we will see a significant increase of authorisations. We also need to consider the impact on Children Services.

Promotion of Adult Safeguarding

The national thematic review of Adult Practice Reviews highlighted serious concerns regarding the lack of awareness of the duty to report Adults at Risk.

As a region we have responded to the findings of the review but we are concerned that further National Work is required in this area.

We would like to see the following:

- ❖ Using the launch of National Action Plan for the preventing abuse of elderly people to promote a national campaign.
- ❖ The development of supporting national practice guidance on specific practice areas to accompany the Wales Safeguarding Procedures.

Workforce Learning

The Workforce Learning Development and Training Safeguarding sub group have highlighted concerns around the continued approach/ requests to promote Train the Trainer models around national safeguarding issues.

The Train the Trainers model is placing demands on the workforce within the region and in particular on key practitioners who need to be focused on front line operational issues. One of the reflections during lockdown has been around the creative use of digital platform to

deliver key learning events.

Reflection on the Use of Unregulated Placements

We have highlighted the potential shortage of Foster Placements across the region but also specialist residential placements in Wales.

We do feel that a mature discussion should be held during the year with Welsh Government, CIW and other interested parties around the use of Unregulated Placements when no further options are available. We are just in process of a completion of a thematic review of cases where the child/ young person required specialist provision. The independent reviewer has highlighted that the period of most stability was achieved for the child/young person when authorities had to develop a provision/ placement which ensures the child/ young person was kept within the region.

Learning from Practice Reviews

One of the challenges the Board has identified for 22/23 is the number of potentially high profile child/ adult practice reviews that will take place in Wales and in England. The NWSB feel that this will be a challenging time and in particular to manage the number of practice recommendations that will be made during the year.

GLOSSARY:

AMH	Adult Mental Health	MAPF	Multi-Agency Professional Forum
APR	Adult Practice Review	MARAC	Multi-Agency Risk Assessment Conference
AWCPP	All Wales Child Protection Procedures	MHLD	Mental Health Learning Disabilities
BCUHB	Betsi Cadwaladr University Health Board	NISB	National Independent Safeguarding Board
CAMH	Children Adolescent Mental Health	NPS	National Probation Service
CCBC	Conwy County Borough Council	NSPCC	National Society for the Prevention of Cruelty to Children
CHC	Continuing Health Care	NWP	North Wales Police
CPR	Child Practice Review	NWSB	North Wales Safeguarding Boards
CRC	Community Rehabilitation Company	NWSAB	North Wales Safeguarding Adults Board
CSE	Child Sexual Exploitation	NWSCB	North Wales Safeguarding Children's Board
DCC	Denbighshire County Council	POVA	Protection of Vulnerable Adults
DoLS	Deprivation of Liberty Safeguards	P & P	Policy & Procedure
LDG	Local Delivery Group	PCC	Police Complaints Commissioner
DHR	Domestic Homicide Review	PHW	Public Health Wales
EAPR	Extended Adult Practice Review	PRUDIC	Procedural Response to Unexpected Death in Childhood
ECPR	Extended Child Practice Review	PVPU	Protecting Vulnerable Persons Unit
FCC	Flintshire County Council	SCWDP	Social Care Workforce Development Partnership
GC	Gwynedd Council	SERAF	Sexual Exploitation Risk Assessment Framework
HASCAS	Health and Social Care Advisory Service	SUSR	Single Unified Safeguarding Review
HSB	Harmful Sexual Behavior	WAST	Welsh Ambulance Service Trust
IOAC	Isle of Anglesey Council	WCBC	Wrexham County Borough Council
KPI	Key Performance Indicator	WG	Welsh Government
LA	Local Authority	YN	Ynys Mon
SMART	Specific, Measurable, Achievable, Realistic, Timely		
LDU	Local Delivery Unit		
LSCB	Local Safeguarding Children's Board		

If you have any comments about the Board's work or wish to find out more, you can contact North Wales Safeguarding Board on

01824 712903 or

Regionalsafeguarding@denbighshire.gov.uk

