



**NORTH WALES SAFEGUARDING BOARD**  
**STRATEGIC PLAN 2022 - 2023**

## **INTRODUCTION**

The North Wales Safeguarding Adults and Children's Board is pleased to publish and present its sixth annual joint strategic plan for 2022-23. An all-age safeguarding people approach to children and adults at risk in North Wales continues to be firmly embedded into Board structures and part of everyday business across the region.

The areas identified for continuing improvement form the basis of a realistic plan and programme of work for the coming year, which seeks to continue to consolidate and strengthen the progress the NWSAB and NWSCB Boards have made in recent years.

The Board's principal and overarching aims are to support agencies to collectively fulfil their statutory responsibilities as outlined in Part 7 of the Social Services and Well-being Act (Wales) 2014, and to protect and prevent children and adults at risk in the region from experiencing abuse and neglect and other kinds of harm.

It has now been two years since the start of the first lockdown due to Covid 19. As we proceed to publication, we as a Regional Safeguarding Board and the agencies we represent, recognise that never before has the need for agencies across the strategic partnership to work together collaboratively, to ensure those most at risk and in need continue to be protected and safeguarded from harm, been so important.

During this time our resolve and resilience as accountable public agencies has been tested to their limits in the most challenging of circumstances. Through excellent partnership working, we as a region have been able to recognise and value the strength and benefits of a collaborative response to this national emergency. In the coming year, we remain committed to continuing to work together to meet the needs of the most vulnerable in our communities, and to learn any lessons to aid the future delivery of high quality, resilient and effective multi-agency safeguarding services.

We have identified four joint priority areas which will be the focus of the region's work over 2022-23. Given the on-going pressures all agencies are working under we feel we need to be realistic regarding the Board's work given the current challenges.

Protecting and preventing children and adults at risk from experiencing harm and promoting the wellbeing of the people of North Wales, enabling them to achieve better outcomes remains central to the Board's work.

Jenny Williams

Chair North Wales Safeguarding  
Children Board

Neil Ayling

Chair North Wales Safeguarding  
Adults Board

## WHAT IS SAFEGUARDING?

The Welsh Government” Working Together to Safeguard People Guidance” Volume 1 states that the objectives of a Safeguarding Children Board are:

- a) To protect children within its area who are experiencing, or are at risk of abuse, neglect or other kinds of harm, and
- b) To prevent children within its area from becoming at risk of abuse, neglect or other kinds of harm.

The objectives of a Safeguarding Adults Board are:

- a) To protect adults within its area who -
  - (i) Have needs for care and support (whether or not a local authority is meeting any of those needs), and
  - (ii) Are experiencing, or are at risk of, abuse or neglect
- b) To prevent those adults within its area mentioned in paragraph (a) (i) becoming at risk of abuse or neglect.

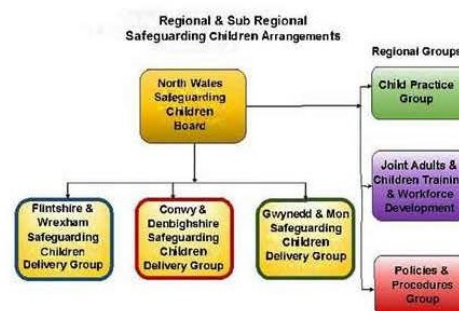
It is the role of both boards to set the strategic direction of safeguarding, including policy direction and monitoring the effectiveness of safeguarding within agencies across the region. Boards commission practice reviews and disseminate learning to practitioners which ensures that local learning is widely known and that safeguarding is high on the agenda at all levels of the workforce.

## BOARD STRUCTURES

North Wales Safeguarding Adults Board



North Wales Safeguarding Children Board



## **BOARD MEMBERSHIP**

### North Wales Safeguarding Adults Board:

**Chair:** Neil Ayling (Chief Officer – Social Services Flintshire County Council)

National Probation Service – Head of Probation Delivery Unit, North Wales

**Vice Chair:** Michelle Denwood - Director of Safeguarding & Public Protection Betsi Cadwaladr University Health Board (BCUHB)

North Wales Police - Detective Superintendent / Protecting Vulnerable People Unit

Anglesey CC - Director of Social Services. Head of Adults Services

Public Health Wales – Designated Nurse National Safeguarding Team

Conwy CBC – Head of Children, Family & Safeguarding Services

North Wales Fire & Rescue Service - Business Education and Arson Reduction Team Manager

Denbighshire CC - Corporate Director Communities & Head of Community Support Services

Gwynedd Council – Corporate Director & Head of Adult Health and Wellbeing Services

Flintshire CC – Chief Officer Social Services & Senior Manager Safeguarding and Commissioning

National Independent Safeguarding Board Representative.

Wrexham CBC – Director Social Services / Head of Adult Social Care

Care Forum Wales – Chief Executive

BCUHB Director of Nursing Mental Health & Learning Disabilities

HMPS - Head of Public Protection

Welsh Ambulance Service Trust – Safeguarding Specialist Quality, Safety & Patient Experience Directorate

North Wales Safeguarding Children Board:

**Chair:** Jenny Williams (Director of Social Care and Education - Conwy County Borough Council)

**Vice Chair:** Simon Williams Detective Superintendent PVPU

Anglesey CC –Director of Social Services, Head of Children and Family Services

Denbighshire CC – Corporate Director Communities & Head of Education & Children’s Services

Flintshire CC – Head of Children’s Services & Director of Social Services

Gwynedd Council – Head of Children & Support Families and Corporate Director

Wrexham CBC – Head of Children’s Services

Betsi Cadwaladr University Health Board - Director of Safeguarding & Public Protection & Named Doctor Children’s safeguarding

Welsh Ambulance Service Trust – Safeguarding Specialist Quality, Safety & Patient Experience Directorate

National Probation Service – Head of Probation Delivery Unit, North Wales

Barnardo’s – Head of Corporate Safeguarding, Assistant Director Children’s Services

Public Health Wales – Designated Nurse National Safeguarding Team

Wrexham Youth Justice Service – Head of Service

Youth Justice Service – Service Manager Prevention & Support

National Independent Safeguarding Board Representative.

NSPCC

HMPS - Head of Public Protection

## **WHAT ARE THE STRATEGIC PRIORITIES / OBJECTIVES OF THE NWSB IN 2022/23**

Given the NWSB has seen an increase in the number of practice reviews starting in 2021, a number of actions will be identified in this year from the reviews. We will also see the publication of two Serious Case Reviews in England which will have implications for all board partners. The National Independent Safeguarding Board publication in 2021 in relation to thematic findings from Adult Practice Reviews has highlighted significant areas of practice which the board must address.

The NWSB will also need to manage the transformation to the Single Unified Safeguarding Review process during this financial year. We will continue with the priority around the response to Covid19 during this year. One of the areas identified in using the self-assessment toolkit is the need to improve engagement.

- 1. To respond effectively to the learning identified from Regional Adult / Child Practice reviews, Regional Multi-agency professional's forum and the National and UK reviews. (NWSB)**
- 2. Effective engagement and communication: To improve engagement and consultation with children and adults at risk, vulnerable groups, professionals and partnerships (NWSB)**
- 3. To support the implementation of new legislation in 2022 including End Physical Punishment and Liberty of Protection Safeguards alongside responding to national action plans on Child Sexual Abuse and preventing abuse of Older People.**
- 4. To continue to ensure a robust, resilient and consistent approach to safeguarding practice during the Covid-19 pandemic (NWSB)**

## **North Wales Safeguarding Boards (NWSB) Priorities**

**Strategic Priority 1** - To respond effectively to the learning identified from Regional Adult / Child Practice reviews, Regional Multi-agency professional's forum and the National and UK safeguarding reviews. (NWSB)

**Outline of Need:** Due to the increase in the number of practice review referrals and increased national and UK activity the Board will need to prioritise its work in this area. Also respond to the Single Unified Safeguarding Review work undertaken by Welsh Government

Ref	Priority Focus	What do we want to achieve?	What are the outcome indicators	Sub Group Lead	Progress
1.1	Child/Adult at Risk	Reduce delays in starting Adult and Child Practice reviews due to limited number of reviewers available	<p>Reduced reliance of commissioning external reviewers</p> <p>Multi-agency Attendance at Practice Review training offered by the NWSB</p> <p>Multi –agency Attendance at the National SUSR Welsh Government training</p> <p>Shared responsibility across all board partners to providing reviewers and Chairs</p>	CPR/APR Group	
1.2.	Child/Adult at Risk	Members of the RSB and its sub groups will continue to support the	The NWSB continue to contribute to the development of and influence	CPR/APR Group	

Ref	Priority Focus	What do we want to achieve?	What are the outcome indicators	Sub Group Lead	Progress
		Single Unified Safeguarding Review national project.	national safeguarding, policy, guidance and legislation.		
1.3.	Adult at Risk	Respond to the National Thematic Review of Adult Practice Reviews	Current regional discrepancies in performance data are addressed  Further awareness training undertaken in self-neglect.	CPR/APR Group	
1.4	Child at Risk	Respond to the key findings from recent CPR's and MAPF	Regional Neglect strategy to include roll –out of regional training program in 2022-23  Action plan response to the Regional MAPF on Children/ Young People who had been displaying mental health issues and had been receiving a service from Tier 3 and Tier 4 CAMHS.	CPR/APR Group	



## **North Wales Safeguarding Boards (NWSB) Priorities**

**Strategic Priority 2** - Effective engagement and communication: To improve engagement and consultation with children and adults at risk, vulnerable groups, professionals and partnerships (NWSB)

**Outline of Need:** Due to the challenges around Covid-19, the NWSB need to improve engagement and consultation during 2022-23 and the support consultation work taking place across the region

Ref	Priority Focus	What do we want to achieve?	What are the outcome indicators	Sub Group Lead	Progress
2.1	Child/Adult at Risk	<p>Effective communication and engagement with adults at risk which enables their voice to directly influence our strategic priorities and work plans.</p> <p>Specifically target the voice of older people and hard to reach groups.</p> <p>Identify key forums already in existence and develop strong links to facilitate regular consultation with vulnerable groups.</p>	The Board's work will be directly influenced by the voice of adults and children at risk.	NW Safeguarding Board Business Unit	
2.2		Communication with Other Regional Strategic Safeguarding Partnerships	<p>Shared priorities and opportunities for any joint working will be established.</p> <p>Assurance will be provided to the Board that contextual safeguarding</p>	NW Safeguarding Board Business Unit	

Ref	Priority Focus	What do we want to achieve?	What are the outcome indicators	Sub Group Lead	Progress
			issues are adequately managed within local partnerships and public protection forums.		
2.3		<p>Raise awareness of the Regional Safeguarding Board and its work. This will be communicated through:</p> <p>Routinely disseminate 7 Minute Briefings in relation to key areas of practice, policy and research</p>	<p>Monitoring of the level of activity on the NWSB website</p> <p>Practitioners will be aware of current priorities and pieces of work within the Board</p> <p>Practitioners will feel more informed in relation to key practice and policy developments and its relevance to their role</p>	NW Safeguarding Board Business Unit	
2.4		<p>Greater Communication /engagement with the General Public</p> <p>Utilise social media to share greater insights into the work and experiences of practitioners, to celebrate good practice and encourage recruitment into the social care workforce.</p> <p>Coordinate targeted, relevant and effective communications</p>	<p>Videos and other communications will be produced which can be used for safeguarding campaigns.</p> <p>Themes of communications will derive from regional priorities and national campaigns</p>	NW Safeguarding Board Business Unit	

Ref	Priority Focus	What do we want to achieve?	What are the outcome indicators	Sub Group Lead	Progress
		campaigns on key regional themes and national campaigns.			

## North Wales Safeguarding Boards (NWSB) Priorities

**Strategic Priority 3 – To support the implementation of new legislation in 2022 including End Physical Punishment and Liberty of Protection Safeguards alongside responding to national action plans on Child Sexual Abuse and prevent of abuse of older people**

**Outline of Need:** The NWSB will need to support the implementation of safeguarding legislation in 2022 across the region and review work in relation to the national action plans.

Ref	Priority Focus	What do we want to achieve?	What are the outcome indicators	Sub Group Lead	Progress
3.1	Child/Adult at Risk	Working with the Welsh Government to ensure the following pieces of legislation are implemented effectively:  End Physical Punishments  Liberty of Protection Safeguards.	All Board partners are aware of the changes in legislation and have appropriate systems in place to manage the changes / impact  Workforce aware of the key changes.	Local Delivery Group	
3.2	Child/ Adult at Risk	Via the Local Delivery Groups, the actions identified within national plans are completed  National Child Sexual Abuse action plan  National Action Plan to Prevent the Abuse of Older People	% of action completed within the timescales.  Key messages shared across the workforce	Local delivery group	

**Strategic Priority 4: To continue to ensure a robust, resilient and consistent approach to safeguarding practice during the Covid-19 pandemic**

**Outline of Need:** The impact of Covid-19 has placed significant pressures on the Safeguarding Board partners and the workforce in the region.

Ref	Priority Focus	What do we want to achieve?	What are the outcome indicators	Sub Group Lead	Progress
4.1	Child/ Adults at Risk	<p>To develop a clear picture of the impact Covid-19 is having across the Region, i.e. for individuals, communities, the work force and partner agencies.</p> <p>To oversee and review the efficacy of measures taken by agencies as they realign governance, processes and practice to respond to Covid-19.</p>	NWSB will continue to identify common multi-agency themes in relation to pandemic, support a collaborative response to key safeguarding issues, and promote and share good practice	<p>NWSCB/NWSAB</p> <p>Local Delivery Groups</p>	
4.2.	Child/ Adults at Risk	A clear message to the public, communities, professionals and partner agencies that safeguarding at these times remains a priority.	The Safeguarding Board will ensure factual information from Public Health Wales, Welsh Government and others is distributed to keep the regional population – citizens and workforce - well informed, whilst seeking to reduce the risk of abuse i.e. online abuse and individuals being scammed/abused i.e. financial etc.	NWSCB/MWSAB	

## HOW MUCH DO WE PLAN TO SPEND?

The Board is funded by contributions from statutory partner agencies who have agreed the funding formula as set out in the Welsh Government document 'Working Together to Safeguard People Volume 1 – Introduction and Overview', the guidance which accompanies the Social Services and Well-being (Wales) Act 2014.

This funding resources a regional safeguarding business unit consisting of a Business Manager, 2 x Business Co-ordinators and 1 x Administrative Support staff who provide support for both Children and Adult Boards.

The specific costs for this support are set out below.

<b>Total costs</b>	<b>£</b>
Staff costs	£189,592.00
APR/CPR costs	£ 43,500.00
Additional costs	£ 38,500.00
<b>Total Expenditure</b>	<b>£271,592.00</b>

## **COLLABORATIVE WORKING**

Across North Wales we have a long history of collaboration across agencies and partnerships. This collaborative work is reflected in the membership of both of our Boards which includes not only the statutory partners prescribed in guidance, but also voluntary sector partners and those where safeguarding is an integral part of their work.

This inclusive approach allows us to include partners who can influence the safeguarding agenda on a local, regional and national level. This is demonstrated by our closer working relationships with the Office of the Police and Crime Commissioner, Safer Communities Board, the Coroner and nationally recognised bodies such as Older Peoples commissioner / Children's Commissioner and the NSPCC / Barnardo's Cymru.

Board members ensure that the work from relevant partnership groups is recognised and reported at Board level. In the coming year we plan to develop these collaborative links.

We will continue to work in close partnership with the National Independent Safeguarding Board (NISB). Our link member attends all Board meetings and provides regular updates on the work of the NISB.

## CONTACT INFORMATION AND USEFUL LINKS

Everyone has a duty to be alert to concerns about the abuse and neglect of people and know to whom they should report their concerns.

If you are worried that a child or adult is being abused or neglected, you must report your concerns to your local Social Services contact.

Details are listed below:

### **If you have concerns about a child:**

#### **Anglesey**

01248 725 888

01248 353 551 (out of hours)

#### **Conwy**

Social Services: 01492 575111

Out of Hours: 0300 1233079

#### **Denbighshire**

01824 712200: Monday – Friday 9am – 5pm

0345 053 3116: Evenings and weekends

#### **Flintshire**

01352 701 000

0345 053 3116 (out of hours)

#### **Gwynedd**

01758 704 455

01248 353 551 (out of hours)

#### **Wrexham**

01978 292 039

0345 053 3116 (out of hours)

### **If you have concerns about an adult:**

#### **Anglesey**

01248 750057

01248 353551 (Out of hours)

#### **Conwy**

0300 4561111 (Office hours)

0300 1233079 (Out of hours)

#### **Denbighshire**

0300 4561000

0345 053 3116 (Out of hours)

#### **Flintshire**

03000 858858

0345 053 3116 (Out of hours)

#### **Gwynedd**

Adults Department, Health and

Wellbeing 01766 772577

01248 353551 (Out of hours)

#### **Wrexham**

01978 292066

0345 053 3116 (Out of hours)