



**NORTH WALES SAFEGUARDING
BOARD
STRATEGIC PLAN 2019 - 2020**

INDEX

	Page
Introduction	2
What is Safeguarding?	3
Board Structures	3
Board Membership North Wales Safeguarding Adults Board	4
Board Membership North Wales Safeguarding Children Board	5
Board Strategic Priority Objectives	6
Summary of Objectives and action plans	7
North Wales Safeguarding Boards (NWSB) Joint Priorities	7
Strategic Priority – North Wales Safeguarding Adults Board	14
Strategic Priority – North Wales Safeguarding Children Board	16
North Wales Safeguarding Boards Improvement Plan	18
NWSB Expenditure	21
Collaborative Working	22
Useful Information	23

INTRODUCTION

The North Wales Safeguarding Children Board (NWSCB) and The North Wales Safeguarding Adult Board (NWSAB) have established and developed a strong collaborative working relationship in the preceding three years. This along with the desire and commitment to move towards a more integrated all age safeguarding people agenda has enabled both NWSCB and NWSAB to publish one overarching strategic plan for 2018-19, encompassing a number of jointly identified and agreed strategic outcomes and priority objectives.

Therefore, it gives us great pleasure to jointly publish the North Wales Safeguarding Board's third annual strategic plan for 2019-20. We are privileged as Chairs of the NWSCB and NWSAB to continue to serve the citizens and diverse communities of North Wales region in leading and fulfilling the Board objectives as stated in Part 7 of the Social Services and Well-being Act (Wales) 2014 to protect and prevent children and adults in the region from experiencing abuse and neglect and other kinds of harm.

The Board's identified strategic outcomes will enable its members and partner agencies to fulfil their statutory responsibilities and build upon excellent progress the NWSCB and NWSAB have made throughout 2018-19 within the context of strong partnership and multi-agency working. During 2018/19 the impact of the Board's good practice has been acknowledged by a Social Care Wales Accolade and this demonstrates the Board's commitment to promoting safeguarding practice within the region.



Jenny Williams
Chair North Wales Safeguarding
Children's Board



Neil Ayling
Chair North Wales Safeguarding
Adults Board

WHAT IS SAFEGUARDING?

The Welsh Government” Working Together to Safeguard People Guidance” Volume 1 states that the objectives of a Safeguarding Children Board are:

- a) To protect children within its area who are experiencing, or are at risk of abuse, neglect or other kinds of harm, and
- b) To prevent children within its area from becoming at risk of abuse, neglect or other kinds of harm.

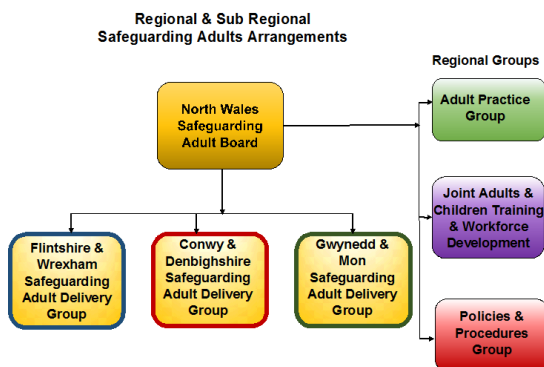
The objectives of a Safeguarding Adults Board are:

- a) To protect adults within its area who -
 - (i) Have needs for care and support (whether or not a local authority is meeting any of those needs), and
 - (ii) Are experiencing, or are at risk of, abuse or neglect
- b) To prevent those adults within its area mentioned in paragraph (a) (i) becoming at risk of abuse or neglect.

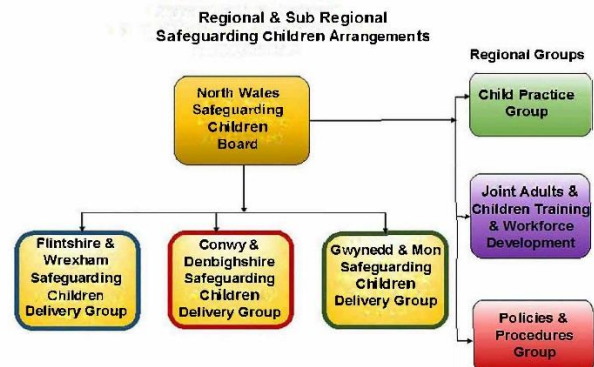
It is the role of both boards to set the strategic direction of safeguarding, including policy direction and monitoring the effectiveness of safeguarding within agencies across the region. Boards commission practice reviews and disseminate learning to practitioners which ensures that local learning is widely known and that safeguarding is high on the agenda at all levels of the workforce.

BOARD STRUCTURES

North Wales Safeguarding Adults Board



North Wales Safeguarding Children Board



BOARD MEMBERSHIP

North Wales Safeguarding Adults Board:

Chair: Neil Ayling (Chief Officer – Social Services Flintshire County Council)

BCUHB Director of Nursing Mental Health & Learning Disabilities

Vice Chair: Michelle Denwood (Associate Director Safeguarding – Betsi Cadwaladr University Health Board BCUHB)

National Probation Service – Designated Officer

Anglesey CC - Director of Social Services. Head of Adults Services

Kent, Surrey & Sussex Community Rehabilitation Company – Assistant Chief Probation Officer for North Wales

Conwy CBC - Strategic Director of Social Care and Education & Head of Service for Children, Family and Safeguarding

North Wales Police - Detective Superintendent/Protecting Vulnerable People Unit

Denbighshire CC - Corporate Director Communities & Head of Community Support Services

Public Health Wales – Designated Nurse National Safeguarding Team

Flintshire CC – Chief Officer Social Services & Senior Manager Safeguarding and Commissioning

Care Forum Wales – Senior Policy Advisor

Gwynedd CC – Corporate Director & Head of Adult Health and Wellbeing Services

Welsh Ambulance Service Trust – Head of Safeguarding

Wrexham CBC - Head of Adult Social Care

North Wales Fire & Rescue Service - Business Education and Arson Reduction Team Manager

HMP Berwyn – Head of Safety and Equality

North Wales Safeguarding Children Board:

Chair: Jenny Williams (Director of Social Care and Education - Conwy County Borough Council)

Vice Chair: Judith Magaw Kent, Surrey & Sussex Community Rehabilitation Company – Assistant Chief Probation Officer for North Wales

Anglesey CC – Director of Social Services, Head of Children and Family Services

Conwy CBC – Head of Children, Family & Safeguarding Services

Denbighshire CC – Corporate Director Communities & Head of Education & Children's Services

Flintshire CC – Head of Children's Services & Director of Social Services

Gwynedd CC – Head of Children & Support Families and Corporate Director

Youth Justice Service – Service Manager Prevention & Support

Wrexham Youth Justice Service – Head of Service

HMPS - Head of Public Protection

Barnardo's – Head of Corporate Safeguarding, Assistant Director Children's Services

North Wales Police – Detective Superintendent PVPU

Betsi Cadwaladr University Health Board - Associate Director Safeguarding & Named Doctor Children's safeguarding

Wrexham CBC – Head of Children's Services

National Probation Service – Head of Local Delivery Unit

Community Rehabilitation Company – Head of North Wales Local Delivery Unit

Public Health Wales – Designated Nurse National Safeguarding Team

NSPCC – Service Manager for North Wales (Children services)

Welsh Ambulance Service Trust – Safeguarding Specialist Quality, Safety & Patient Experience Directorate

WHAT ARE THE STRATEGIC PRIORITY OBJECTIVES OF THE BOARDS?

In order to combine the previous strategic plans of both Safeguarding Boards we undertook work with Board members, sub group members and practitioners to establish our current position in relation to our work plans and agree a baseline. Our completed work items and progress to date will be reported as required to Welsh Government in our next Annual Report 2018 to 2019.

From the Board's Business development day and also in discussion with other Safeguarding Partnership Boards in North Wales, we were able to identify two strategic share priorities and one individual priority each for the Children's and Adults Board for 2019/20:

Exploitation (Shared Priority)

Domestic Abuse (Shared Priority)

Improved awareness and compliance in the Adult at Risk Process (Adult's Board Priority)

Safeguarding in Education (Children's Board Priority)

In addition, during the completion of the self-assessment toolkit, we identified three areas of core business that we will look to make further improvements on, this included:

- Regular updates in relation the NWSB Risk Register
- Clear lines of accountability between the Safeguarding Partnership Boards in North Wales
- To continue to embed learning from Adult/ Child Practice reviews across the region.

SUMMARY OF OUR STRATEGIC PRIORITY OBJECTIVES AND HOW WE PLAN TO ACHIEVE THEM

North Wales Safeguarding Boards (NWSB) Joint Priorities

Strategic Shared Priority 1: Exploitation

Outline of Need: It has been identified that across the region, the need to ensure a seamless partnership response across all safeguarding partnerships in the region for adults/child at risk of exploitation that protects people from falling through gaps between existing service provision. The different types of exploitation are brought together as part of one strategy because they share many commonalities, for example deception along with the imbalance of power. This approach will help victims where there are gaps in provision of support as many victims will not have statutory care and support needs.

Ref	Priority Focus	What do we want to achieve?	What are the outcome indicators?	Sub Group Lead
1a	Exploitation	To develop a North Wales Regional Exploitation Strategy	<p>Success will mean that:</p> <p>Regional Exploitation Strategy implemented</p> <ul style="list-style-type: none"> ▪ Clarity and agreement of roles and responsibilities ▪ Governance Arrangements are clear and concise ▪ Working together has a positive impact on the Communities in North Wales 	<p>NWSB in partnership with Safer Communities Board</p> <p>Local Practice Delivery Groups</p>

Ref	Priority Focus	What do we want to achieve?	What are the outcome indicators?	Sub Group Lead
1b	Exploitation	Intelligence Gathering & Sharing - Preventing people from engaging in Adult/ Child exploitation	Success will mean that: We prevent Exploitation through improved information and knowledge transfer between key partner agencies: <ul style="list-style-type: none"> ▪ The Development of an overarching Regional Information Sharing Protocol in North Wales around Exploitation ▪ Key at risk locations are known and there is a plan to assess the risk in all areas of North Wales and provide agencies with necessary information ▪ A dialogue is established with hard to engage groups (Adults/ Child at Risk) ▪ Key sectors (e.g. transport, hospitality, retail) are well informed on their responsibility to tackle exploitation. 	Local Practice Delivery Groups / Consultation and Communication/ Engagement Sub Group

Ref	Priority Focus	What do we want to achieve?	What are the outcome indicators?	Sub Group Lead
1c	Exploitation	<p>Developing Victim Service Provision - Strengthening safeguards against adult /child exploitation by protecting victims from further victimisation and protecting those who may be susceptible to exploitation</p>	<p>Success will mean that:</p> <p>Fewer people are deceived or forced into abuse. Victim support arrangements in North Wales are in place. Identified Victims are supported and able to continue with their lives:</p> <ul style="list-style-type: none"> ▪ Victims are effectively referred into the most appropriate services, according to their needs. ▪ There is a victim centred approach to enforcement and legal activity surrounding known cases of exploitation. 	NWSB in partnership with the Safer Communities Board
1d	Exploitation	<p>Tackling Perpetrators - Prosecuting and disrupting individuals and groups responsible for adult/child exploitation</p>	<p>Success will mean:</p> <p>The disruption of criminal activity around exploitation</p> <ul style="list-style-type: none"> ▪ Increased awareness and efficient reporting leads to improved intelligence. ▪ Development of regional and local profiles 	NWSB in partnership with the Safer Communities Board

Ref	Priority Focus	What do we want to achieve?	What are the outcome indicators?	Sub Group Lead
			<ul style="list-style-type: none"> ▪ Support existing enforcement activity (e.g. trading standards, environmental health etc.) ▪ Deterring potential offenders through increasing the risk and their awareness of it ▪ Exploitation is prevented as offenders are aware of service presence and those who are vulnerable are aware 	
1e	Exploitation - ALL	Training & Awareness Raising - Reducing the harm by exploitation through improved victim identification and enhanced support.	Success will mean that: Professionals are trained and are aware of the signs of exploitation. More victims of exploitation are identified as awareness has been increased among professionals and the public. There will be an increase in the identification of victims, referrals through the NRM and improved access and knowledge of support mechanisms available <ul style="list-style-type: none"> ▪ Development of a Regional Exploitation Training program 	Workforce and Training Sub Group/ Consultation and Communication/ Engagement Sub Group

Ref	Priority Focus	What do we want to achieve?	What are the outcome indicators?	Sub Group Lead
			<ul style="list-style-type: none"><li data-bbox="1171 252 1626 411">▪ Professionals aware of the signs and therefore potential victims are supported and exploitation prevented<li data-bbox="1171 443 1641 641">▪ To achieve consistency of messages across different platforms so that there is a common approach and understanding in North Wales	

Strategic Shared Priority 2: Domestic Abuse

Outline of Need: It has been identified via the evaluation of last year Business Plan that further work is still required to increase awareness and challenge attitudes of violence against women, domestic abuse and sexual violence underpinned by the national objectives in the 2015 Violence against Women, Domestic Abuse and Sexual Violence (Wales) Act and in line with the VAWDASV Regional Strategy.

Ref	Priority Focus	What do we want to achieve?	What are the outcome indicators?	Sub Group Lead
2a	Domestic Abuse	Improve joint working between the NWSB and the Safer Communities Partnership to promote compliance with the requirements of the VAWDASV	<p>Success will mean that:</p> <p>Partner agencies are able to demonstrate compliance with the National VAWDASV indicators</p>	<p>NWSB in partnership with Safer Communities Board</p> <p>Workforce and Training sub group</p>
2b	Domestic Abuse	Increase awareness and challenge attitudes of VAWDASV across North Wales	<p>Success will mean that:</p> <p>Improved access to high quality and up to date information on VAWDASV</p> <p>Ensure that all data and information is current and that statutory partners maintain and update this information.</p>	<p>Consultation and Communication/ Engagement Subgroup</p>

Ref	Priority Focus	What do we want to achieve?	What are the outcome indicators?	Sub Group Lead
2c	Domestic Abuse	Increase awareness of children, young people and Adults of safe, equal and healthy relationships	<p>Success with mean that:</p> <p>Whole family interventions – intergenerational support to enable families to develop healthy and safe relationships.</p> <p>Robust pathways for children, young people and Adults to report violence and seek support and advice</p>	Local Practice Delivery groups
2d	Domestic Abuse	Review effectiveness of systems data and monitoring requirement for safeguarding approaches as they relate to VAWDA SV	<p>Success will mean:</p> <p>Children’s and Adults wellbeing is promoted and protected through effective and timely identification, assessment and response to risks</p>	Local Practice Delivery Groups

Strategic Priority 3: Improve awareness and compliance around the Adult at Risk process (North Wales Safeguarding Adults Board)

Outline of Need: From the Adult Safeguarding audit work that has been undertaken in North Wales, it has been identified that we still need to improve understanding and development of the Adult at Risk process within the region, to ensure improved outcomes for Adults at Risk by way of being able to respond quicker, more effectively and consistently to safeguarding reports across North Wales.

Ref	Priority Focus	What do we want to achieve?	What are the outcome indicators?	Sub Group Lead
3a	Adult at Risk	Improved understanding of the Adult at Risk Process as set out in Working Together Guidance	<p>Success will mean:</p> <p>Improvement in the quality of safeguarding reports</p> <p>Increased clarity across all agencies around the difference between Adult at Risk and a Quality of Care concern</p>	<p>Local Practice Delivery Groups</p> <p>Quality Assurance & Performance Group</p>
3b	Adult at Risk	The person's wishes and feeling evident throughout the Safeguarding Process	<p>Success will mean:</p> <p>The Adult has greater choice and control within the safeguarding process</p> <p>Advocacy services are engaged when required</p>	<p>Local Practice Delivery Groups</p> <p>Quality Assurance & Performance Group</p>
3c	Adult at Risk	Increase awareness and understanding around "The	Success will mean that:	Local Practice Delivery Groups /

Ref	Priority Focus	What do we want to achieve?	What are the outcome indicators?	Sub Group Lead
		Enquiries stage of the Adult at Risk” Process	<p>All partner agencies are able to undertake enquiries when required</p> <p>Improved Joint Working around Adult at Risk Practice</p> <p>The Adult at Risk is Kept Safe</p>	<p>Corporate Safeguarding Panels</p> <p>Workforce and Training sub groups</p>

Strategic Priority 4: Safeguarding in Education (North Wales Safeguarding Children's Board)

Outline of Need: During the next year, the North Wales Safeguarding Children Board will strengthen and support safeguarding across all schools (including Early Years, Independent Schools and Further Education providers). It has been identified that further awareness raising work needs to be done with all education providers around specific practice areas such as Harmful Sexual Behaviour and Home Educated Children.

Ref	Priority Focus	What do we want to achieve?	What are the outcome indicators?	Sub Group Lead
4a	Safeguarding in Education	Increase the profile of the North Wales Safeguarding Children's Board across all education providers in the region	<p>Success will mean:</p> <p>All Education Providers across North Wales are engaged in the Board's work program's</p> <p>Schools across North Wales are meeting the requirements set out in the Keeping Learners safe guidance</p> <p>Designated Senior Person for Child Protection has access to all appropriate learning resources and safeguarding training</p>	<p>NWSCB</p> <p>Local Practice Delivery Groups</p> <p>Quality Assurance & Performance Group</p>
4b	Safeguarding in Education	All school age children are educated in an environment in which they are able to flourish and are kept safe	<p>Success will mean:</p> <p>Systems are in place to ensure the safety of electively home educated children/</p>	<p>NWSCB</p> <p>Local Practice Delivery Groups</p>

Ref	Priority Focus	What do we want to achieve?	What are the outcome indicators?	Sub Group Lead
			<p>children and young people who are not accessing mainstream education</p> <p>NWSB Drama project has raised the awareness of Year 6/7 pupils around keeping safe.</p>	Quality Assurance & Performance Group
4c	Safeguarding in Education	Reduce the number of incidences of school children/ young people displaying harmful sexual behaviour	<p>Success will mean that:</p> <p>Children/ Young People are kept safe</p> <p>Multi-Agency Practitioners are provided with high quality training and advice about normal sexual behavioural development and how to respond to problematic sexual behaviour</p>	Local Practice Delivery Groups / Workforce and Training sub groups
4d	Safeguarding in Education	To safeguard children and young people in Education from harm and making the wrong choices in relation to Knife Crime	<p>Success will mean that:</p> <p>Children/ Young People are kept safe</p> <p>No incidences in Education are reported around knife crime</p>	NWSCB in partnership with the Safer Communities Board.

NWSB IMPROVEMENT PLAN:

Outcome 5: Strong Leadership & Evidenced Compliance:

To provide strategic leadership in relation to safeguarding & to ensure that the North Wales Safeguarding Boards are able to demonstrate effectiveness in delivering against their statutory functions

Ref	Actions	Resource & Lead	Measures	Outcomes	RAG
5a	Development of a risk register - to ensure that NWSB is made aware of any risks within and across services and is assured and updated on any action to be taken to minimise the risk.	NWSB Board Members	Risk register reviewed at every Board Meeting. Number of new risks added Number of risks closed	NWSB are better informed of identified risk within and across services. Professionals are increasingly aware of critical factors in improving safeguarding in North Wales. Risk register is used to support statutory decision making, mitigating risks associated with for example; lack of clear statutory guidance and the transformation of services within and across partner organisations.	

Ref	Actions	Resource & Lead	Measures	Outcomes	RAG
5b	Establish clear lines of accountability and reporting mechanisms - between the Safeguarding Boards (Children & Adults), Public Service Boards, Area Planning Boards, Safer Communities, VAWDASV Group etc.	NWSB	Robust reporting arrangements	Increased dovetailing leading to improved outcomes for individuals in need of care and support.	

Outcome 6: Increased Knowledge & Continuous Learning:

To be assured that we know the children, young people and adults who are most at risk in our region and effectively safeguard them. To continually develop and improve the way we work so that outcomes improve.

Ref	Actions	Resource & Lead	Measures	Outcomes	RAG
6a	To Respond to and implement action plans from the learning of APR's/CPR's and any high profile reviews such as national reviews/practice reviews to identify, and monitor the implementation of changes that	NWSB NWSB CPR/APR Group	Learning events. Practice guidance notes. Audits confirm learning has been embedded into practice.		

Ref	Actions	Resource & Lead	Measures	Outcomes	RAG
	<p>help to prevent similar abuse or neglect happening to others, ensuring the Board that partners have taken appropriate action to improve areas of concern.</p>		<p>Implementation of actions as set out in the action plan.</p> <p>Learning outcomes are reflected in agencies policies, practice, training and guidance.</p> <p>Professionals are increasingly aware of identified learning to improve practice and critical factors in improving safeguarding in North Wales.</p> <p>Professionals are able to apply specific learning outcomes to the wider principles of Safeguarding.</p> <p>Dissemination of learning and improved practice.</p>		

HOW MUCH DO WE PLAN TO SPEND?

The Board is funded by contributions from statutory partner agencies who have agreed the funding formula as set out in the Welsh Government document 'Working Together to Safeguard People Volume 1 – Introduction and Overview', the guidance which accompanies the Social Services and Well-being (Wales) Act 2014.

This funding resources a regional safeguarding business unit consisting of a Business Manager, 2 x Business Co-ordinators and 1 x Administrative Support staff who provide support for both Children and Adult Boards.

The specific costs for this support are set out below. These costs have remained static for the past three years.

<u>Total costs:</u>	£	209,193.40
Staff costs	£	155,570.00
Day to day running costs	£	53,623.00
Other costs:		
Child Practice Reviews (Costs met from reserve)	£	20,430.00

COLLABORATIVE WORKING

Across North Wales we have a long history of collaboration across agencies and partnerships. This collaborative work is reflected in the membership of both of our Boards which includes not only the statutory partners prescribed in guidance, but also voluntary sector partners and those where safeguarding is an integral part of their work.

This inclusive approach allows us to include partners who can influence the safeguarding agenda on a local, regional and national level. This is demonstrated by our closer working relationships with the Office of the Police and Crime Commissioner, Safer Communities Board, the Coroner and nationally recognised bodies such as NSPCC / Barnardos Cymru

Board members ensure that the work from relevant partnership groups is recognised and reported at Board level. In the coming year we plan to develop these collaborative links.

We will continue to work in close partnership with the National Independent Safeguarding Board (NISB). Our link member attends all Board meetings and provides regular updates on the work of the NISB. We are also involved with the work on developing the New National Safeguarding Procedures.

CONTACT INFORMATION AND USEFUL LINKS

Everyone has a duty to be alert to concerns about the abuse and neglect of people and know to whom they should report their concerns.

If you are worried that a child or adult is being abused or neglected you must report your concerns to your local Social Services contact. Details are listed below:

If you have concerns about a child:

Anglesey 01248 725888

Conwy 01492 575111 (Out of hours) 01492 515777

Denbighshire 01824 712200 (Out of hours) 0345 053 3116

Flintshire 01352 701000 (Out of hours) 0345 0533116

Gwynedd 01766 772577 (Out of hours) 01248 353551

Wrexham 01978 292039 (Out of hours) 0345 053 3116

If you have concerns about an adult:

Anglesey 01248 752752

Conwy 0300 456 1111 (Out of hours) 01492 515777

Denbighshire 0300 4561000 (Out of hours) 0345 053 3116

Flintshire 01352 803444 (Out of hours) 0345 0533116

Gwynedd 01766 772577 (Out of hours) 01248 353551

Wrexham 01978 292066 (Out of hours) 0345 053 311